

2 DINOSAURS

Where was Tarbosaurus found and who is his famous cousin?

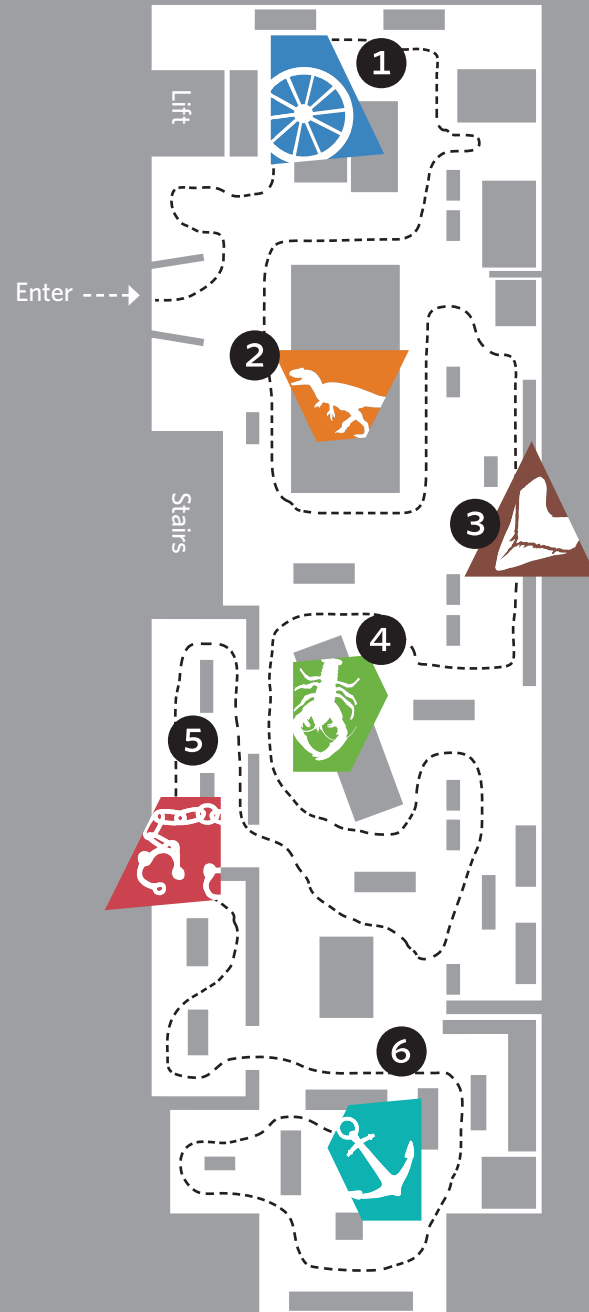
Look closely at Allosaurus' skin. Which reptile family does it remind you of?

Think about what these dinosaurs eat then help them find their dinner.

Muttaborrasaurus



Tyrannosaurus Rex



www.qvmag.tas.gov.au/Education

KIDS' TRAIL



TASMANIAN CONNECTIONS

1 TRANSPORT

What powers the phaeton and the cab? _____

Draw something on the vintage car that is from more recent times.



What would you use a button-hook for?

What are the "Boneshaker" bicycle's wheels and yellow spokes made from? _____



3 GEOLOGICAL TIMELINE

Complete the famous rhyme about Mary Anning

'She sells
on the

Draw your favourite fossil

Which age is known as the
'Age of Mammals'?

What megafauna may have been
around at the same time as the
First Tasmanians?



4 TASMANIA'S FAUNA



Which wallaby
stands out from
the others and why?

What do echidnas
eat for dinner?

Draw what
they use
instead of
hands?



Find the green
lobster on display.
Why is it becoming an
endangered species?

What is the thylacine's closest relative?

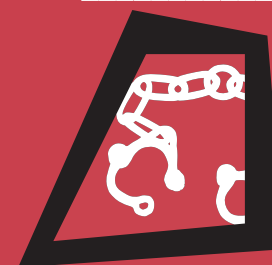
5 BEATTIE COLLECTION

Draw the design from the
Franklins' card table

How do you think the
pepperbox pistol
got its name?



Where were each
of the cell doors from?

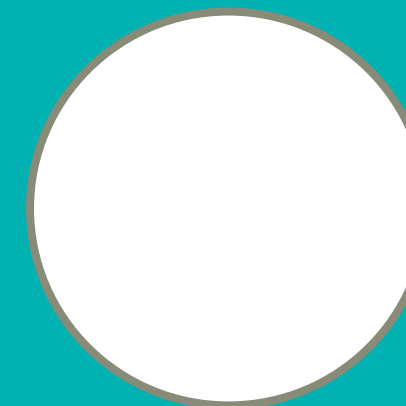


6 SYDNEY COVE

Find the *Sydney Cove* rudder.
Try and get a sense of scale.
How many of you tall
would the rudder of the
ship be?



What is the name of the new beer
brewed using the yeast from the
Sydney Cove?



Draw the
pattern
from a
shard of the
recovered
ceramics.



What did the stranded
crew use for shelter?
