

# COLONIAL TRAIL THROUGH TAS CONNECTIONS

The Beattie collection is a snapshot of life in the colonies at the time.

## 1 JAMES KELLY AND THE WHALING INDUSTRY

Whaling was an important industry in the early colonial period and no-one was better know in this industry than Capt. James Kelly.

Sketch one of his possessions and link it to his business pursuits



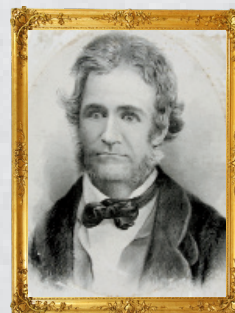
## 2 BUSHRANGERS

Bushrangers were a part of Colonial life - making it both dangerous yet colourful.

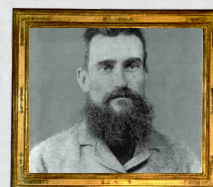
Which of these bushrangers escaped the noose to lead a long life? Circle your answer.



MATTHEW  
BRADY



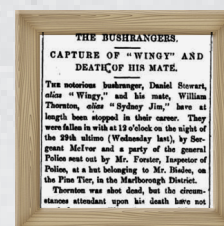
MARTIN  
CASH



WILLIAM 'JACKEY',  
JACKEY' WESTWOOD



JOHN 'ROCKY'  
WHELAN



DANIEL 'WINGY'  
STEWART

## 3 DEATH MASKS

Death Masks of both criminals & famous people were considered 'scientific' evidence in colonial times.



Whose mask is this?

WHAT WOULD BE THE BEST/  
WORST THING ABOUT BEING  
ALIVE IN COLONIAL TIMES?

-----

-----

-----

-----

-----

-----

# 4

## THE IRISH

Many Irish poor who were trying to survive the potato famine were convicted of crimes and transported like other criminals of the day. However, a group of young Irishmen formed a political group to campaign against the poor government of the day.

What was this group called?

Who was the most famous of these political prisoners?



Can you guess what these objects were used for?

# 5

## WEAPONRY

Colonial times were harsh and weaponry was brutal and designed to prove that 'might' was 'right', both when confronting rebellious convicts, audacious bushrangers or Aboriginals.

Sketch the cutlass used by guards at Port Arthur.

# 6

## CONVICTS

Criminal behavior was thought of as inherent and could only be reformed by hard punishment.



What did this unfortunate young man steal?

Why is this ironic?

# 7

## ATTITUDE TO WOMEN

Colonial attitudes to women were quite contradictory. They were either; put on a pedestal to be revered, or treated as objects to be owned. Women were NOT encouraged to speak their mind or disobey and getting pregnant was considered the 'fault' of the women. As less than a third of the babies born in women's prison survived, women saw the female factory prison as a place without hope. Rebelliousness was sometimes the last effort to maintain their individuality.

One of these women lived a life of privilege the other a life of struggle. Was it bad luck, bad judgment, or bad character? Why?



Sign your work