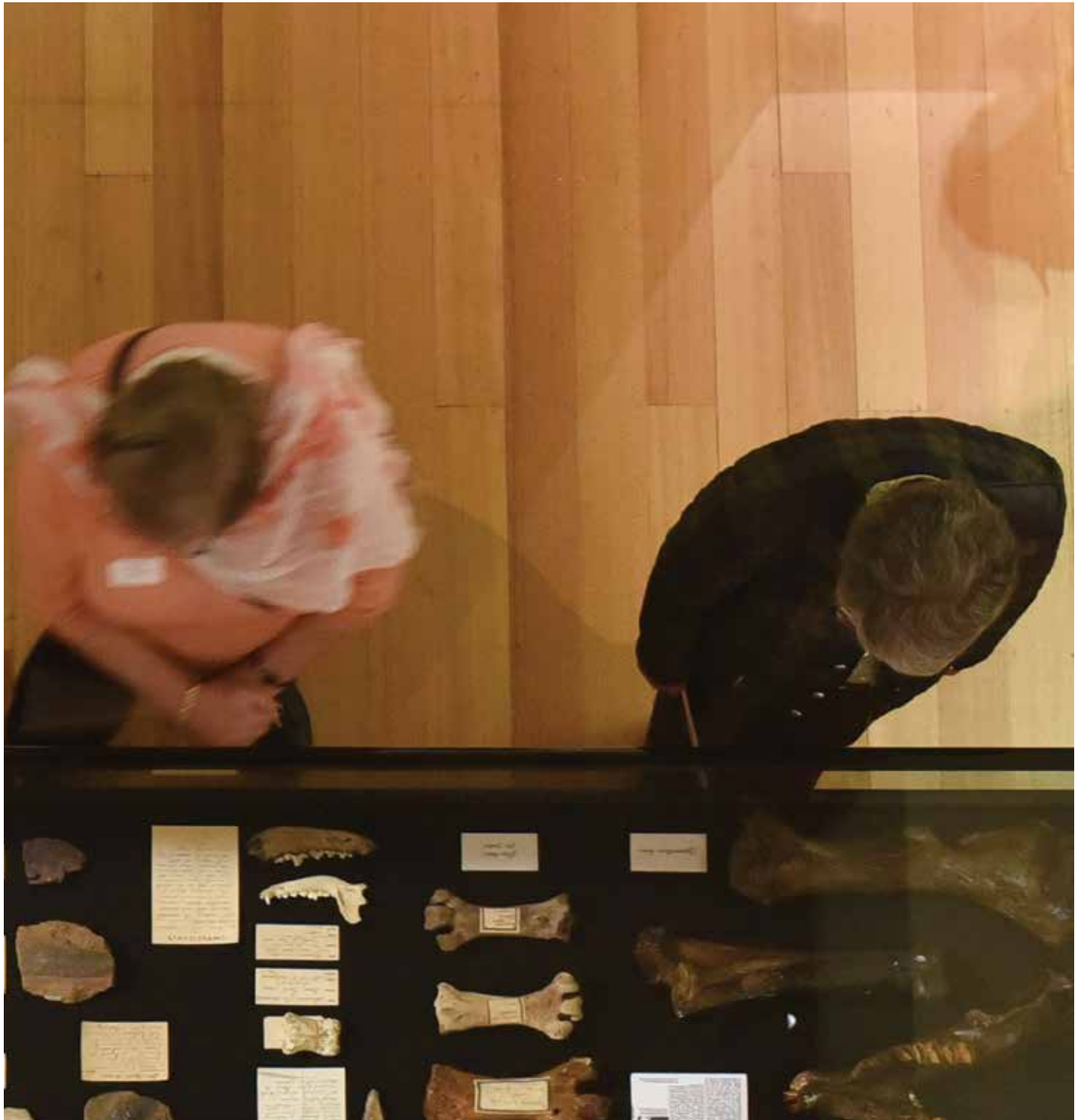


# ANNUAL REPORT

Queen Victoria Museum and Art Gallery 2015–2016



City of **LAUNCESTON**  
**QUEEN VICTORIA**  
**MUSEUM & ART GALLERY**



Tasmanian  
Government



## To the Minister for the Arts

The Mayor and Aldermen of the City of Launceston are pleased to submit, in accordance with the Local Government Act 1993, the Annual Report of the Queen Victoria Museum and Art Gallery for the year ended June 2016.

A handwritten signature in black ink, appearing to read 'Robert Dobrzynski', with a stylized flourish at the end.

**Robert Dobrzynski**, General Manager, City of Launceston

## Mission Statement

To be a leader in the intellectual and creative development of Launceston and Tasmania by increasing the enjoyment and understanding of our natural and cultural heritage.

# Contents / Profile

Profile .....	3
Director’s Report .....	5
Highlights .....	7
Collections and Research .....	9
Exhibitions and Conservation .....	12
Visitor Operations .....	15
Strategic Directions, Outcomes and Performance 2015–2016 .....	18
Corporate Governance .....	24
Partnerships .....	27
Outreach .....	29
Collaborations .....	32
Support .....	33
Structure .....	36
Staff .....	36
Statistics .....	38
Appendices .....	38

The Queen Victoria Museum and Art Gallery (QVMAG) features two destinations for local, national and international audiences: a former 19th century railway workshop at Inveresk which houses the Natural Sciences and History collections, and the Royal Park building on Wellington Street, a dedicated Art Gallery.

The mixture of industrial heritage interpretation and state-of-the-art exhibition spaces at the Museum make the Inveresk site unique in Australia.

Within the Royal Park building, visitors can see works from the Queen Victoria Art Gallery’s Fine Art and Decorative Arts collections.

Cover and Back Cover  
Guests enjoying the Queen Victoria Museum and Art Gallery’s 125 years exhibition.

Page 1  
Background: The Blacksmith Shop. Photograph by David Maynard.

Right  
(detail) A collection of non-Australian birds from the Victorian era. Acquired c. 1910. Photograph by David Maynard. Queen Victoria Museum and Art Gallery, Tasmania.

**Locations**

Museum 2 Invermay Road Inveresk  
Art Gallery 2 Wellington Street Launceston

Both are open 10am to 4pm daily (closed only on Good Friday and Christmas Day). Open until 5pm for the month of January. General admission is free.

**Contact**

T 03 6323 3777  
E [enquiries@qvmag.tas.gov.au](mailto:enquiries@qvmag.tas.gov.au)  
[www.qvmag.tas.gov.au](http://www.qvmag.tas.gov.au)





# Director's Report



In 2015–16 we continued to improve on our performance across the many activities and services of the Queen Victoria Museum and Art Gallery (QVMAG). We have delivered an almost balanced budget with a modest surplus of \$4722. This demonstrates our close adherence to the financial controls over our activities throughout the year, made even more remarkable by the unexpected projects that were financed within the actual operating result.

We were able to present a comprehensive program across the organisation and the three managers Janet Keeling (Visitor Operations), Andrew Johnson (Exhibitions and Conservation), and Martin George (Collections and Research), provide a summary of their departments' activities later in this Annual Report. Overall we delivered an impressive 285 different types of events. It is fabulous to see this volume of activity. It demonstrates that QVMAG matters and that we are making a difference to the lives of the many that visit us. This does not take into account the many more who visit us through our social media.

We recorded a very slight increase in visitation. At 133 669 people this is still our best ever result. We cannot rest on this and will be working harder in 2016–17 to better it again. With the growth of regional tourism into Tasmania we should be attracting many more into our two sites. Having said this, I was delighted when QVMAG was awarded the *Outstanding Visitor Experience* at the Launceston Chamber of Commerce Business Excellence Awards 2015 in October.

We did well in our commercial enterprises, with the shops meeting budget and a 30% increase into our donation boxes, indicating that our visitors are happy with their experience. Venue hire also had a dramatic increase and it is always pleasing to see our facilities being used beyond our normal operations. Often it can be the first introduction to QVMAG which then translates into future visits.

In August we celebrated Guan Di's birthdate with a celebration of all things Chinese in the Art Gallery in association with our Guan Di Temple. The event included a dramatic lion dance by members of the Launceston Chinese community. It was an opportunity to bring out

many of our Temple items that we have in our collection.

National Science Week was another huge activity. It drew on the resources of almost the entire organisation and included the lantern walk in association with the *Light the Night ArtStart* exhibition. Leaving from the Museum, we saw a procession of over 500 participants make their way to the Art Gallery.

The talk by art historian Gavin Fry on Australian contemporary artist Rick Amor in April was captivating. This tied in nicely with the QVMAG Arts Foundation and its efforts to acquire the oil painting *Erith and Deal Island* by Rick Amor as the second in our Masterpieces for Tasmania acquisition program.

It was also pleasing to see the new series of special public presentations under the *IQ Lecture*, instigated by our Public Programs Coordinator, Belinda Cotton. It is an opportunity for people associated with QVMAG to present recent research work. I am mindful that similar talks were very much part of QVMAG from our earliest days and this demonstrates the important role we play in education and research.

A highlight of the year was QVMAG celebrating its 125th anniversary on 29 April 2016. We opened a special exhibition entitled *The World Inside* at the Art Gallery and this included an eclectic array of objects from across time and the disciplines of QVMAG. It was object-rich, with 440 items from our collection, displayed in the style of the late 19th century. The exhibition paid special tribute to the founding Directors, Herbert Hedley Scott (1897) and then his son Eric (1938). In recognition of this, Tasmanian contemporary artist and Herbert's great-granddaughter, Dr Mary Scott, completed a series of works that were part of the exhibition. I was pleased that we were able to use some of the showcases that were used in the 1891 opening and many of Scott's original caption labels, demonstrating that we don't throw anything out!

Going back we also helped celebrate the 125 years of UTAS with the exhibition *Growth Change Influence: The University Art Schools in Tasmania*. It recognised the development of the art schools in Hobart and Launceston and

Right  
Guests enjoying the new *The World Inside*: 125 years of the Queen Victoria Museum and Art Gallery exhibition on 29 April 2016.



I was pleased that we were able to draw extensively from our own collection, showing that our Curators over that time had been selectively collecting. We made the conscious decision to feature the art teachers, and although we could not include them all we had over 70 teachers represented. We were ably assisted with the exhibition and catalogue by former UTAS arts staff Pat Brassington, David Hamilton and Deborah Malor.

It did seem a year of milestones as we had another UTAS 125 year exhibition with *Beds, Books and Bandages* celebrating nurse training in Launceston in our Community Gallery at the Museum. The opening was a fun evening as nurses reunited with each other and swapped stories and reminiscences that spanned almost 125 years! The other great talking point was the exhibition *The Quiet Achievers: Celebrating 80 years of the CWA in Tasmania*. It was another lively opening in the Community Gallery that surprisingly did not include scones.

Also surprising was the huge number of people who turned up for the Philip Kuruvita photographic exhibition *Faces of Launceston*. With over 100 people featured in the exhibition and the book, we were bound to be popular with friends and relatives.

We had two major announcements bookending the year. The first was the announcement that we had been successful in our application to the Tasmanian Community Fund (TCF) for funding for the new *Gallery of the First Tasmanians*, which was announced during NAIDOC Week in July. The TCF granted the maximum amount of just under \$300 000 for a project that will take two years to complete, with QVMAG contributing a similar amount in cash and in kind.

It is an exciting project that will see a permanent dedicated space that will focus on the continuing story of Aboriginal Tasmania reaching back 40 000 years and beyond. It will redress a significant gap in QVMAG's presentation and we will be guided by the Project Manager, Tasmanian Aboriginal academic Greg Lehman and our Aboriginal Reference Group, chaired by Aboriginal Elder Aunty Patsy Cameron.

The other announcement was the recent research that has been done on the excavated material from the wreck of the *Sydney Cove* (1797), which was featured on the ABC *Catalyst* science program in June. Research instigated by one of our Conservators, David Thurrowgood, ably assisted by several external scientists and organisations, has uncovered the 'world's oldest beer' in our collection. What fun! We have since trademarked *Preservation Ale* in honour of the island that provided the ship's last refuge, and hope that with more research we may see several commercial opportunities for the cargo of this long-lost ship to be traded. On a more sober note, it does demonstrate the importance of museum collections and their value to research.

We continued to collaborate with many organisations across our sector. An increasingly important link is our connection with the University of Tasmania, which announced during the year its plans to relocate the Launceston campus to the Inveresk precinct.

In June we signed a formal agreement with the Tourism Research and Education Network which includes UTAS, the Department of State Growth, National Parks (Tas) and QVMAG. Tourism is Tasmania's largest and most significant industry. While tourism promotion is important, it is also vital that we better understand tourism trends and why people visit us or not. To that end we conducted an intensive visitor survey over three weeks in January, our busiest month, especially for interstate and international visitors. Coordinated by Dr Kim Lehman from the UTAS School of Business and Economics, the research will have wider application to others in the cultural sector.

In closing, we recognise the broad community support we continue to receive from so many. We acknowledge the considerable ongoing financial contribution of the City of Launceston and the State Government of Tasmania. We continued to receive financial support through the Plomley Foundation, Philip Archer Trust and Turner Ralph Bequest and the many individual donors who gave generously during the year.

We received direct support through our external committees: Museum Governance Advisory Board; QVMAG Friends; the Arts Foundation; the Aboriginal Reference Group; and our Honorary Research Associates and volunteers. I am mindful that it is our 125th year and that the very essence of what is the Queen Victoria Museum and Art Gallery today is due to the many people over that time that have supported it.

Above all, it has been the dedication and professionalism of the staff that has made 2015–16 a memorable year.

**Richard Mulvaney**, Director



# Highlights



- On 29 April 1891 the Victoria Museum and Art Gallery (as it was then known) opened its doors to Launceston and the world. One hundred and twenty-five years later to the day, the Museum officially opened *The World Inside: 125 years of the Queen Victoria Museum and Art Gallery*. The exhibition featured an eclectic array of objects from across time and the disciplines of QVMAG. It was object-rich, with 440 items from the collection, displayed in the style of the late 19th century. The exhibition paid special tribute to the founding Directors, Herbert Hedley Scott (1897) and then his son Eric (1938). In recognition of this, Tasmanian contemporary artist and Herbert's great-granddaughter, Dr Mary Scott, completed a series of works that were part of the exhibition.
- QVMAG helped celebrate 125 years of the University of Tasmania with the exhibition *Growth Change Influence: The University Art Schools in Tasmania*. It recognised the development of the art schools in Hobart and Launceston and drew extensively from the QVMAG collection. Over 70 teachers were represented.
- The Museum featured a photographic exhibition by Tasmania's only Grand Master of photography, Philip Kuruvita. For the past 20 years Philip has been documenting the City of Launceston via portraits of its people. The sixth exhibition in the series celebrated another 100 people who are making a difference in the city.
- QVMAG was successful in its application to the Tasmanian Community Fund (TCF) for funding for the new *Gallery of the First Tasmanians*, which was announced during NAIDOC Week in July. The TCF granted the maximum amount of just under \$300 000 for a project that will take two years to complete, with QVMAG contributing a similar amount in cash and in kind. It will be a permanent dedicated space that will focus on the continuing story of Aboriginal Tasmania, reaching back 40 000 years and beyond and featuring at the Art Gallery in 2017.
- Research undertaken on the excavated material from the wreck of the *Sydney Cove* (1797) featured on the ABC *Catalyst* science program in June. Research instigated by one of our Conservators, David Thurrowgood, ably assisted by several external scientists and organisations, has uncovered the 'world's oldest beer' in our collection. The beer has been trademarked *Preservation Ale* in honour of the island that provided the ship's last refuge.
- QVMAG was awarded the *Outstanding Visitor Experience* at the Launceston Chamber of Commerce Business Excellence Awards 2015 in October.



1



2



3



4



5



6



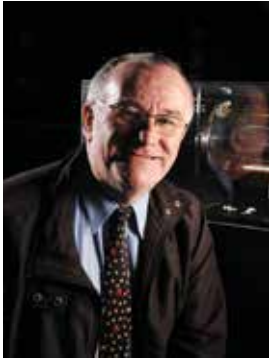
7

**Left**  
*Night at the Museum, National Science Week 2015.*

**This page**  
1. QVMAG Director, Richard Mulvaney featured within the recreated first curator's office in the *125 years* exhibition space.  
2. Guests at the *ArtRage 2015 Collection* opening. 3. *Faces of Launceston* exhibition opening featuring photographs by Philip Kuruvita. 4. Two bottles of PRESERVATION™ Ale brewed at Queen Victoria Museum and Art Gallery by David Thurrowgood and QVMAG Research Associate Dr Daryl Howard using a period recipe and cultured yeast. 5. *On Albatross Island* exhibition. 6. *UTAS Beds, Books and Bandages* opening. 7. The Hon Will Hodgman MP, Premier of Tasmania featured with Patsy Cameron, Chair of the QVMAG Aboriginal Reference Group and Greg Lehman, Project Manager of the *Gallery of the First Tasmanians*.



# Collections and Research



QVMAG's Collections and Research Department comprises the History, Natural Sciences and Visual Arts and Design Sections, in addition to the Library and Planetarium.

The History Section has continued to be involved in a variety of activities and to expand its important collection through the year. Amongst several significant projects is the History Section's involvement, in partnership with the University of Manchester and the Launceston Historical Society, in the Kerry Lodge Archaeology Project. This is a study of the site just south of Launceston where convicts quarried stone for the construction of the Kerry Lodge Bridge.

The History Section has also continued its research on Tasmanian Aboriginal stone tools, which is an ongoing project funded by a La Trobe University ARC grant. This work is being performed in collaboration with Richard Cosgrove and Evan Livingstone-Thomas.

The Section has seen considerable advances in reorganising its collection housed in the Plant Shop at Inveresk. Honorary Research Associate Jai Paterson led the project, which was funded by the Philip Archer Trust. It has made the collection items in this large store more accessible.

Meanwhile, the QVMAG Community History Section has continued to be very popular, with a steady number of researchers making use of the facility. The Section has uploaded a further 8000 images to the *History Online* database, which has resulted in a corresponding increase in enquiries relating to this important collection of photographs.

The QVMAG Library continued to focus on the development of its rare and Tasmanian collections, cataloguing of all book collections, and the addition of holdings to the Australian National Bibliographic Database (ANBD), also known as Libraries Australia, and Trove.

A total of 3235 titles were added to the QVMAG Library's catalogue. Holdings for 5318 titles were added to the ANBD. These were either newly catalogued items or retrospective additions made by the Library's volunteers.

A major highlight was the completion of the cataloguing of the Library's suite of special

collections: the Plomley, Maddock, Bligh and Reynolds collections were all completed during the year.

The major acquisition highlight was that of the incunabulum (or incunable—a printed book published before 1501) *Historici liber de vita Christi: AC Pontificum omnium*, authored by Bartholomaeus Platina and published by Johannes Rubeus Vercellensis in Treviso, Italy in 1485. It is only the eighth intact incunabulum to be acquired by a Tasmanian institution, and is understood to be the oldest book to be held in public hands in northern Tasmania.

The Natural Sciences Section has continued to be active in researching, and adding to, its collections. Curator David Maynard and Collections Officer Simon Fearn spent eight days in the field sampling insects from across north western Tasmania, and this work included about 2000 specimens in 10 insect orders. A significant number of these represent the first records of certain species from Tasmania's north west coast. This work represents a significant addition to the QVMAG entomological collection and adds a large number of poorly known species to international databases. This collection also provides important baseline information that can be used in future years to measure changes relating to human activity like agriculture, forestry and climate change.

In addition, a number of holotypes were added to the collection, including a new species of peacock spider (*Maratus proshynskii*) from north eastern Tasmania. Specimens had been collected and donated to QVMAG over 20 years ago by researcher Tracey Churchill, highlighting the important temporal role of the QVMAG collection.

The Natural Sciences Section was also heavily involved in National Science Week 2015, with staff actively engaging with the public. The theme of Science Week was *Light*, and in addition to various natural science displays, the Section covered subjects such as bioluminescence.

The QVMAG Planetarium is the second southernmost permanent planetarium in the world and has continued to attract excited audiences. Attendances for the 2015–16 year



totalled 6905, including 2466 in 74 school groups. Three new shows were commenced during the year — *We are Aliens*, *Asteroid: Mission Extreme*, and *Capturing the Cosmos* — and these have been presented to many audiences. The most popular part of each show is always the live 'tonight's night sky' segment.

Saturday Planetarium shows continued to be mainly run by the Planetarium's important group of volunteers from the Astronomical Society of Tasmania. Volunteers also assisted greatly with stargazing nights for the QVMAG's 2015 National Science Week offering.

A major focus for the Visual Arts and Design (VAD) Section was the oil painting collection. Records were thoroughly examined for accuracy and consistency in preparation for their upload onto the QVMAG website. The project, funded by the Gordon Darling Foundation, has required the production of high-quality images of every painting in the collection. A great deal of new photography was required, and undertaken, in order to have high-resolution images suitable for the 21st century digital environment. This is a significant enhancement of access to the collection.

Another focus in VAD was the collection of 19th century works on paper. These works include watercolours, prints, drawings and albums, and provide a different and insightful understanding of the visual history of Tasmania and Tasmanian artists, in particular the contribution made by female artists.

In June the VAD Section saw the departure of Rosalie Kelly, VAD Registrar and former Assistant Curator of Craft and Design. QVMAG will miss her important contributions.

We were saddened by the passing of well-known artist and teacher Beatrice Louise (Bea) Maddock on 9 April. Maddock was born in Hobart in 1934 and was well known as an innovative and experimental printmaker and a painter of multi-panelled, panoramic landscapes. She was a highly influential printmaking teacher in Victoria, and Acting Dean at the Victoria College of the Arts from 1979 to 1980. On returning to Tasmania she became head of the School of Art at the Tasmanian College of Advanced Education before becoming a fulltime artist. The major collections of her work are held in the National Gallery of Australia and at QVMAG. Her work is also held in all State art museums and many regional collections throughout Australia, as well as in several overseas museums and galleries.

Lastly, it is important to recognise the valuable work performed by our many Honorary Research Associates. They provided advice about QVMAG's collections, and researched many topics including object conservation, the history of the Launceston region, Tasmanian minerals, millipedes, birds and spiders, freshwater invertebrates in Lake Pedder, parasitoids, and Aboriginal rock art.

**Martin George**, Collections and Research Manager



**Above**  
Bea Maddock: A great Australian artist (1934–2016).

**Below**  
Bea Maddock exhibition, Queen Victoria Art Gallery.





# Exhibitions and Conservation



QVMAG incorporates 20 gallery spaces, smaller display areas and a number of display cases across the Art Gallery and Museum. The Exhibitions and Conservation Department strives to ensure that a dynamic exhibition program is delivered and maintained in all these display areas across the two sites. To guarantee that this happens, there is a core team of 15 staff covering a broad range of disciplines including Exhibition Design, Graphic Design, Conservation, Marketing and Communications, Photography, Construction, Installation and Art Handling, Information Technology and Audio Visual. We are fortunate to have all of these skills and depth of knowledge among our talented staff.

The Department strategy is to *design, produce and maintain a high standard of exhibitions and displays, presenting the QVMAG collection in a creative and thoughtful way, and ensuring the visitor experience is informative, enjoyable and inspiring. The collections are presented looking at their best, and in a way that is safe, ensuring that objects and works will be available to the public for many years to come.*

To ensure that the Department delivers exhibitions and displays in line with the strategy we work towards the following goals:

- Work closely with the Curators
- Work in line with the exhibition process
- Be resourceful, creative, innovative, enterprising, show initiative and work as a team
- Demonstrate sustainable work practices
- Work within the WPH&S guidelines
- Conduct leading-edge research into technology and exhibition practices
- Promote an internal culture that ensures the delivery of significantly enhanced visitor experiences
- Assist in learning programs
- Attract quality touring and travelling exhibitions
- Support conservation practices.

This year there were many examples demonstrating the Department's strategy and vision in our permanent and temporary exhibition program.

*The World Inside: 125 years of the Queen Victoria Museum and Art Gallery*, an exhibition installed

in Gallery 3 at the Art Gallery, was a celebration of our history and provided an opportunity for Curators of all three disciplines to reflect on the past and combine collection objects not often displayed. This is a strong example of the Exhibition and Conservation Team working closely with the Curators. The result has been an eclectic mix of the weird, wonderful, surprising, extraordinary, and unexpected. The additional theme of the Scott family offered both historical and contemporary objects and art to hang side by side in the gallery space. Dr Mary Scott, the great-granddaughter of Herbert Hedley Scott, our first Curator, created a number of contemporary works illustrating her reflections on the Museum's history.

The *Thunderbirds* exhibition, which was part of the *Community Collector* series, featured objects from two collectors: the full collection of episodes from the classic *Thunderbirds* TV series, and a selection of memorabilia. This created an immersive gallery of all things *Thunderbirds*.

*Faces of Launceston*, the 20th anniversary show by Launceston photographer Philip Kuruvita, featured portraits of individuals with a connection to Launceston. The Museum Touring Space worked well as a venue for this exhibition of 100 new portraits and a mixture of portraits from previous shows.

*Beds, Books and Bandages: 125th Anniversary of Nurse Education* helped justify the dedication of a gallery space to local community groups. The exhibition, put together by a dedicated group of volunteers and QVMAG staff, displayed stories and memorabilia from the early days of nursing life in Tasmania.

*On Albatross Island* was a special exhibition featuring the works of two artists who travelled to this very isolated destination to have a rare opportunity to create a body of works based on close-up and personal experiences with the magnificent shy albatross. Installed in the Art Gallery, a custom hang and careful lighting contributed to an exhibition appreciated by many.

This year saw the Museum and Art Gallery fortunate to host a number of national touring exhibitions. A collection of works by William Kentridge was on loan from the National

Gallery of Australia during May and June. An exhibition featuring Stephen Bowers, *Beyond Bravura*, was held at the very start of the year at the Art Gallery as was the exhibition *Arthur Boyd: An Active Witness*. At the Museum, *CUSP*, an exhibition presenting Australian designers from a broad range of disciplines, ran through to August 2015. We also celebrated the 21st anniversary of *ArtRage*.

The *Gallery of the First Tasmanians* will present a dedicated permanent gallery offering an insight into the local Aboriginal history. This year the Exhibitions and Conservation Department worked closely with the Curatorial team, looking to create a gallery environment that is unique and inviting to a broad range of visitors from a range of demographics. The design brief has been formulated, capturing the aspirations of the Curators, their visions and values. Themes have emerged as have stories that need to be told. The way information is to be delivered and how this exhibition will engage with the audience and the community is vital to this project. A key element in this exhibition is how the displays will encourage learning and offer opportunities for education.

The Department this year has demonstrated an increased commitment to the digital movement by introducing a new staff member to the team in the role of IT Technical Officer. The position provides support for IT and audio-visual equipment used in QVMAG exhibits. The team continues to provide audio-visual support for QVMAG lectures, exhibition openings and other events. They maintain their close relationship with the Innovation Circle and have worked with UTAS in a final-year project group to develop a wayfinding kiosk for the Museum at Inveresk. Great work has been done with the Natural Sciences Section to develop streamlined data uploading to the QVMAG Collection Management Data Systems (CMDS) using spreadsheets as an intermediary data capture tool.

The Conservation Section has been fortunate to secure the engagement of four new QVMAG Honorary Research Associates to assist with collection projects during the period. These four individuals are active within their profession, and three of them are young professionals who hold PhD qualifications. They have significant professional networks and have already enabled QVMAG to access high-value resources and highly technical laboratories to assist in the conservation and study of our collections. The recognition of these busy professionals in the value of the QVMAG collections, and in the work we do, will greatly assist us to receive professional network exposure and academic publication outcomes.

Conservation volunteers were officially recognised by the City of Launceston for their contribution to the Department by receiving hours of service certificates. The Conservation Section assisted Public Programs with the preparations of the Arts Tasmania / Museums Australia Disaster Preparedness Workshop that was hosted by QVMAG. Contributions were made to numerous public programs, including presenting behind-the-scenes tours and talks on preservation and conservation practices.

As part of their role, the Conservators regularly respond to conservation-related public enquiries, such as how to look after items in the home, framing advice for members of the public, display recommendations for small collections, and deterioration of artworks.

The Graphic Design and Marketing Departments continued to work well together, delivering high-quality graphic work for exhibitions (both touring and in-house), publications, wayfinding and marketing and promotional collateral.

Andrew Johnson, Exhibitions Manager



Above *ArtPlay* interactive creative gallery space and; *Growth Change Influence: The University Art Schools in Tasmania* exhibition.  
Right Celebrating 125 years of QVMAG.





# Visitor Operations



The QVMAG Front-of-House Sections within the Visitor Operations Department have had another successful year providing our services for and interacting with our visitors. This is not only when the visitors are on site at the Museum or Art Gallery, but when they contact us by telephone, email and via social media.

TripAdvisor once again ranked QVMAG as number 4 out of 63 things to do in Launceston. Our exhibitions, programs and staff received numerous positive recommendations on TripAdvisor, our Facebook page and on our feedback forms. The collected postcodes indicate that the majority of our visitors are local or from other parts of Tasmania, followed by interstate tourists from Victoria and NSW. Our overseas visitors are our third highest segment, with Chinese visitors accounting for around one third of international visitors, followed next by the United Kingdom.

Our Attendant Team transitioned into the new City of Launceston corporate wardrobe which makes them easily identifiable to our visitors and provides a professional appearance.

QVMAG partnered with UTAS and TRENd to survey 2329 visitors consisting of 1082 from the Art Gallery and 1217 from the Museum. These were conducted by over 30 staff members and QVMAG volunteers. The survey's main aim was to determine what motivates people to visit museums and art galleries.

We recorded a 30% increase in the contributions to our donation boxes at both sites. This fine result demonstrates the appreciation our visitors, including our local visitors, have for their free entry to both the Museum and Art Gallery.

Our heritage buildings continued to be challenged by the extreme wet weather conditions that the north of the State experienced this year, and therefore roof maintenance and replacements were some of our critical capital projects. We also installed magnetite on the Art Gallery upstairs windows, which has been a huge success. It has improved the gallery climate conditions more than expected and noise reduction has been an unexpected bonus.

We continued to improve facilities for our visitors by augmenting the seating in the Art Gallery. Some tables and chairs were installed in the front garden, where visitors are able to enjoy their refreshments. At the Museum, a water fountain was installed in the courtyard and some fixed table settings can be found in the Education area near the outdoor *Phenomena Factory*.

Our venue hire income improved by 84% on last year and this included four weddings: three in the Central Gallery at the Art Gallery and one bespoke reception in the foyer of the Museum. There were other large events, cocktail parties and conferences. Our venues held 285 different types of events, QVMAG functions, meetings and workshops across both sites. The Attendant Team professionally supported these events and their success would certainly be compromised without their assistance in looking after guests, and the security of the collections and sites.

Our shops continue to be very popular attractions, not just for our Museum and Art Gallery visitors, but for those who come especially to make their gift purchases. The shops performed well in meeting the budget, with the average spend per customer being \$23.87. The average sale per visitor was \$2.07, and customers represented 8.68% of visitation. As always, the highest-selling category was books, followed by geology specimens, gifts, toys and science toys, and jewellery.

A highlight in product development was the 24 new postcards to coincide with *The World Inside* exhibition celebrating 125 years of the Queen Victoria Museum and Art Gallery, seven new postcards celebrating Tasmania's night skies, two new postcards depicting colonial artworks, six new postcards with iconic items or images from the History collection and nine new postcards highlighting beautiful specimens and collection objects from Natural Sciences.

Three hundred and ten children participated in the School Holiday Program and its income increased by 130.9%. The Planetarium income increased by 9.3% on last year and delighted almost 7000 audience members.



Three hundred  
and ten children  
participated in the  
School Holiday  
Program



Playgroup's twice weekly sessions saw 1300 children and accompanying adults attend stimulating early learning activities. Participation of nearly 5500 people in National Science Week exceeded the previous year's total by over 35%. Over 800 school students participated in various events, including some of the favourite activities: *Nights at the Museum*, *Lightning Shots*, *The Crazy Scientist* and the inaugural *Lantern Walk*. Five hundred and fifty-five children and adults walked from the Museum to the Art Gallery, many with their home-made lanterns which tied in with the *ArtStart* exhibition opening. The *ArtStart* exhibitions and openings have certainly increased in terms of artwork contributions and attendances at the openings. In November, *ArtPlay* opened at the Art Gallery, providing a different type of interactive space for our young and not-so-young visitors.

In July, *Arthigh*, the new annual exhibition for high school students, was launched. This connected with *The Tamar Valley Peace Festival*, with QVMAG hosting its 2015 Peace Lecture. The speaker was the 2015 Sydney Peace Prize recipient,

George Gittoes AM, and his partner Hellen Rose, who held audiences enthralled with their life's work of art, the Yellow House Jalalabad; bringing healing and rediscovering peace through creative endeavour in the arenas of war.

The 2015 NAIDOC Week was celebrated by a morning tea hosted by Patsy Cameron, Co-Chair of the QVMAG Aboriginal Reference Group, who announced the beginning of the *Gallery of the First Tasmanians* project. Following the morning event was an afternoon of cultural presentations by members of the QVMAG Aboriginal Reference Group including David Gough, Cultural Practitioner; Lola Greeno, Aboriginal Elder and Artist; and Denise Robinson, Arts Tasmania. The day heralded an historic moment for the Tasmanian Aboriginal people, QVMAG, the City of Launceston and Tasmania.

**Janet Keeling**, Visitor Operations Manager



Above Bec and Sam get married High Tea style.



# Strategic Directions, Outcomes and Performance

## 2015–16

### Strategic Direction 1: Develop and Maintain the QVMAG collections.

**Objective: Develop and strengthen QVMAG collections, with a focus on Tasmanian culture including social histories, visual arts and the sciences.**

- In the History Section a number of significant objects have been collected, with the highlights including a fine beaded necklace with beads spelling out 'VDL Macquarie River November 1842 Mary', and a Resurgam MK 111 ultralight aircraft built by Rob Edginton in Launceston to a design by Gordon Bedson, 1985–87.
- Other History highlights include a very significant working model beam engine built by Henry Smedley in 1864; an excellent collection relating to the Midland Hunt Club c. 1906–09; and two early and important photographic images—a rare Pannotype thought to be of the Frost family in Westbury, and Ferrotypes of a man.
- The development of the Library's rare and heritage collections was a key ongoing objective over the year. As an example, 83 titles were added to the Bookplates Rare collection. The Library continued to develop its General Collection in support of the research activities of all sections of QVMAG. Again, the emphasis was on Tasmanian subjects.
- The Natural Sciences Section saw a number of holotypes added to the collection, including a new species of peacock spider (*Maratus proshynskii*) from north eastern Tasmania. Two significant acquisitions were a spatial and temporal collection of Tasmanian and British butterflies from the 1950s to the 1970s, and a shell collection of about 1500 marine molluscs from the Island of New Britain.
- In Visual Arts and Design, the purchase of the rare and important oil on canvas work by John Campbell (1855–1924) entitled *View of Launceston 1881* depicts the declining late colonial era and the developing city of Launceston. The work includes views of the Gorge and the Tamar River as well as vistas and well known buildings. Works on paper have been the focus for 19th century art collections and over 50 works have been curated into exhibitions, change-overs in the Colonial Gallery and loans to other institutions.

**Objective: Maintain, protect and make accessible QVMAG collections.**

- In the Library, 40 items were sent to Conservation for boxing and/or repair work. Work commenced on the digitising of all QVMAG records, occasional papers, and research and technical reports. These will gradually be made available via QVMAG's Publications List web page.
- The Natural Sciences Section saw the purchase of five new entomology cases to house its important entomology collection.
- In addition to the Visual Arts and Design Section focusing on uploading images and core data for the QVMAG Oil Paintings collection, it has provided images for publications, lectures, exhibitions, student degrees, private collections and private family study.
- Approximately 200 objects were prepared by Conservation staff for internal display, with a particular focus on preparing objects for the *125 years* exhibition.
- Preventive conservation projects were undertaken, ensuring ongoing preservation of the collection, including rehousing significant documents from the Natural Sciences collection, making blackout curtains to reduce light exposure to the Fine Art works on paper and photographs, making custom boxes for fragile objects in the History collection, and rehousing rare books from the Library collection.
- Condition reporting and assisting with the installation and de-installation of incoming travelling shows at the Museum and Art Gallery.
- QVMAG collections were made accessible by carrying out conservation treatments and safely packaging artworks for outward loans to a range of local and national institutions. In 2015–16 these included the National Gallery of Australia, National Portrait Gallery, Art Gallery of South Australia, Art Gallery of Ballarat, Heide Museum of Modern Art, Mornington Peninsula Regional Gallery, Mosman Art Gallery, Tasmanian Museum and Art Gallery, Westbury Historical Society, and the Space Gallery at Scotch Oakburn.
- The Disaster Plan was enacted, with Conservators providing advice to other staff to ensure that significant collection items were protected during the Launceston flood alerts in June 2016.
- There were positive achievements with the *Sydney Cove* collection. Approximately 8000 visual records of the collection items and excavation were digitised at a high standard, and are now potentially available for access after resources are made available for online publishing.
- The assessment and conservation rehousing of the most significant collection of Tasmanian emu bones has commenced and is on track to achieving an industry-leading outcome.
- Approximately 330 natural sciences specimens were assessed for handling, storage and display needs. The Scott register was digitised, making the Natural Sciences collection more accessible. Substantial numbers of wet specimens were relocated and their housing containers

made safe for research and public access following conservation advice and input.

- Approximately 600 history objects were assessed for movement and packaging solutions, particularly in relation to the Plant Shop re-organisation project. Many large objects with display potential were relocated after being identified as having high display potential.
- Development continues of the Museum's Collections Management Database System (CMDS). A total of 1780 records were added to the QVMAG CMDS in the year. Object registrations into the system totalled 1578 items, and 202 support records were added. This gives a total of 329 962 records in the CMDS as of 30 June 2016.

## **Strategic Direction 2: Increase the audience for engagement with exhibitions and programs of the QVMAG.**

**Objective: Present and promote an annual exhibitions program.**

- Ten touring exhibitions on art, photography, and science were installed.
- Nineteen temporary exhibitions primarily drawing objects from the QVMAG collections in art, history and science were installed.
- Thirteen permanent exhibitions across both sites were maintained.
- Media attention for the Museum and Art Gallery via media calls, door stops and exclusives was extremely positive with a piece of news on the QVMAG featured across various media outlets at least twice fortnightly on average.
- QVMAG Director Richard Mulvaney, Theatre North at the Princess General Manager Greg Leong and City of Launceston Alderman Danny Gibson each promoted upcoming events and exhibitions on City Park Radio (Richard) and ABC Northern Tasmania (Greg Leong and Alderman Danny Gibson).
- The QVMAG website was maintained and used as a primary tool for promoting and advertising the exhibitions program.
- Exhibitions and associated programs and events were promoted via QVMAG social media.
- Promotional material was professionally produced, including the *QVMAG Friends* newsletter, *Exhibitions and Events* brochure, *QNews* electronic newsletter; and brochures for permanent exhibitions including the Blacksmith Shop.
- QVMAG continued to increase the use of technology in exhibitions and displays, offering greater depth of information to enhance the visitor experience. Ninety-seven pieces of equipment including media players, projectors, monitors and touch screens, were utilised.

- Provision of audio, visual and interactive installations for both in-house and externally sourced exhibitions was undertaken throughout the year.
- We continued to maintain and repair elements of exhibitions and displays. We also investigated the development of new hardware and delivery systems for static and interactive installations.

**Objective: Present educational and public programs to support QVMAG collections and exhibitions programs and engage with new audiences.**

- Key events included 2015 National Science Week, a *Thunderbirds* exhibition, part of the Community Collector series, *IQ Lecture Series*, three *ArtStart* exhibitions for primary children, and four hundred and fifty public programs and events were held attracting thousands of people.
- Interweave Arts ran *Remade Fashion Parade* in November at the Museum featuring special needs clients. QVMAG also exhibited Newstead College's *The way I see it*, both of which drew good audience numbers.
- Over 200 children participated in *Kids4kids* in November, hosted at the Museum. We also hosted Gifted Awareness day at the Museum and Art Gallery, which brought almost 200 children participating in activities coordinated by QVMAG experts as well as external facilitators.
- During the year the Natural Sciences Team delivered more than 20 workshops and off-site programs which reached over a thousand students. Three hundred and twenty-five school groups booked to visit the Museum and Art Gallery and brought 7589 students and 1359 accompanying adults.
- *ArtRage* drew 58 groups of students comprising 1052 students and 98 adults.

## **Strategic Direction 3: Promote the new identity of QVMAG through its Inveresk and Royal Park sites.**

**Objective: Promote the QVMAG Art Gallery and Museum, its collections and associated programs through a targeted marketing program to reinforce the QVMAG brand.**

- The Marketing Plan and Social Media Policy continue to be developed, with a greater focus on building a community via our Facebook and QVMAG blog pages. Electronic direct mail continues to be a focus for marketing reaching 400 plus people via the monthly e-newsletter *QNews*. The Social Media Policy was incorporated into the QVMAG Digital Strategy.
- The QVMAG website received 975 957 unique website hits, with the History Online Collections database continuing to be the most popular page.
- An ongoing tourism strategy was delivered, ensuring that QVMAG is a must-see attraction in Launceston for local,

national and international visitors. Advertising opportunities in tourist publications were taken up including, *Travelways*, *Explore Tasmania* and other publications highlighting the region's attractions. TripAdvisor ranked QVMAG as number 4 out of 63 things to do in Launceston.

- Extensive media coverage has been received with media stories for the year across radio, television and print. The 'World's Oldest Beer' story broke in mid-June and was reported nationally. The story was also republished online around 350 times including in China, Spain, Vietnam, and Greece with social media views over a million. The three QVMAG Facebook posts to break the story had a combined reach of 6900 people, 52 shares and 114 likes.
- The City of Launceston new brand treatment was implemented across the Queen Victoria Museum and Art Gallery, including stationery, signage and decals, and promotional and marketing collateral.

#### **Strategic Direction 4: Create a welcoming visitor experience.**

**Objective: Provide high-quality services and facilities for visitors.**

- TripAdvisor ranked QVMAG as number 4 out of 63 things to do in Launceston this year.
- 'The lovely ladies behind the counter welcomed us in ...' and 'So many great exhibitions ... I loved the Blacksmith area and the rocks, oh and the bikes.'
- 'There is something for everyone. And when you are done there is the Railway Carriage Cafe—they have the best jelly slice.'

- Visitors can prepare for their visit by referring to our website and phone or email a booking or enquiry. When they visit, there are maps and flyers available as well as staff to answer questions. At various times Museum Guides and Gallery Guides are available for tours and talks.

#### **Strategic Direction 5: Ensure a secure and sustainable financial operating base to support QVMAG facilities, collections and programs.**

**Objective: Secure QVMAG resource base.**

- The State Government of Tasmania has confirmed its ongoing financial contribution on an annual basis at the current rate plus CPI.
- An increase in external grant funding for major projects was secured, including \$290 000 from the Tasmanian Community Fund for the *Gallery of the First Tasmanians*.
- An increase in commercial activities, including retail and venue hire.
- A 30% increase in cash donations.

#### **Strategic Direction 6: Deliver the highest standards of corporate governance.**

**Objective: Manage QVMAG in accordance with legislative and governance standards.**

- The Museum Governance Advisory Board continued to provide governance advice during the year. A future governance paper was presented to the City of Launceston Council with all recommendations accepted.



Above Light the Night National Science Week activity in 2015.





- Arts consultant Robyn Archer was appointed to consider the recommendations and to conduct a review of the Launceston cultural sector, including QVMAG.
- QVMAG Friends committee continued to manage the Friends program and assisted with many of the Friends events.
- QVMAG Arts Foundation completed the second major fundraising appeal under the Masterpieces for Tasmania program, raising over \$30 000 for the acquisition of the Rick Amor painting *Erith and Deal Islands, Bass Strait*, 2014.
- The Aboriginal Reference Group continued to provide guidance on all aspects of Tasmanian Aboriginal culture and with their assistance, QVMAG was successful in its application to the Tasmanian Community Fund to create the *Gallery of the First Tasmanians*.

### **Strategic Direction 7: Maintain a safe and productive working environment for all staff and visitors.**

#### **Objective: Provide a safe working environment.**

- Annual building maintenance statements and occupancy permits are compliant.
- There has been a progressive upgrade of computers by City of Launceston's Information Technology Department.
- A folding machine was purchased to increase efficiency and eliminate risk of RSI when folding brochures for mailouts.
- Incident reporting is encouraged and there was no increase in incidents but one additional near-miss.

#### **Objective: Encourage a 'can-do' professional culture that encourages staff to achieve their potential.**

- Conservation secured several generous grants towards undertaking collection research on the *Sydney Cove*. The project has been supported with funds of the order of \$100 000, and an equivalent amount of in-kind support. The Conservation Section, in collaboration with the Marketing and Media Coordinator, successfully generated national and international media exposure by promoting a number of collection-based care and research activities.
- The QVMAG Library continued to collaborate with other Museum sections, including those of CORE, in the provision of services and acquisition of new resources. It continued to manage the publications line of its budget to ensure a sustainable publications program going forward, and primarily for the benefit of the Museum's three curatorial areas.
- Natural Sciences staff were encouraged to realise their potential in their several individual subject areas relating to Tasmanian insects, fauna and marine life.
- Chris Arkless has now been appointed primarily to the Planetarium and has taken on a far larger role in the production of material for the dome, answering enquiries and performing all other aspects of Planetarium operation.

- The Visual Arts and Design Section has seen continued research into its areas of expertise, with preparation underway for a major exhibition of the works of the convict and colonial Tasmanian artist Frederick Strange.
- Annual performance reviews are conducted, with QVMAG continuing to be one of the most compliant directorates.
- Various staff members have taken the lead with ideas for exhibitions, public programs and events which link to their areas of professional interest.
- The City of Launceston's values are embedded in day-to-day activities and can be observed in teamwork within QVMAG and across the City of Launceston.
- Staff members have had opportunities to attend conferences, present professional papers, give public talks and attend accredited leadership development courses.

### **Strategic Direction 8: Develop an active collaboration strategy to enhance collection, programming and research.**

#### **Objective: Build collaborative partnerships.**

- The commencement and building of collaborative partnerships is very important in the operation of the Collections and Research Department.
- The Library maintains a strong collaborative partnership with The Royal Society of Tasmania, and the Library Coordinator maintains the Northern Chapter's web pages while continuing to manage its Library collection. The Library is developing links with LINC Tasmania and the Tasmanian Archives and Heritage Office, primarily by attending the Joint Tasmanian Archives Consultative Forum.
- The History Section has maintained its involvement with La Trobe University's Archaeology ARC research project under Dr Richard Cosgrove, examining Tasmanian Aboriginal stone tools. It also has a collaboration with the University of Tasmania through a number of projects, including the Kerry Lodge Archaeology Project.
- The relationship between QVMAG and UTAS continues in other areas, including Natural Sciences and Astronomy, with the Planetarium maintaining a close collaboration with the School of Mathematics and Physics and the Australian Institute of Physics.
- QVMAG's relationship with the Tasmanian Museum and Art Gallery (TMAG) also continues with, for example, the works lent to TMAG for its *Tempest* exhibition.

Left Tasmanian and English butterflies donated by Professor Tyler.





Above Rick Amor, *Erith and Deal Islands*, 2014, oil on canvas. Purchased by the people of Tasmania through the Masterpieces for Tasmania Fund and the QVMAG Arts Foundation, 2015.



# Corporate Governance

QVMAG is fortunate in having external committees that provide governance and community input into the life of the organisation.

## Museum Governance Advisory Board

The Museum Governance Advisory Board (MGAB) continued to offer advice and support to QVMAG Management and the Aldermen of the City of Launceston (CoL) during the year. Neil MacKinnon (Chair), Keith Adkins, Jillian Dearing, Thomas Dunning, Janine Healey and Robin Holyman served on the Board throughout the year, together with ex-officio members City of Launceston Mayor Albert van Zetten, General Manager Robert Dobrzynski and QVMAG Director Richard Mulvaney. Rodney Paul decided not to extend his term as a member of the Board and left during the year. James Riggall joined the Board, replacing Rodney. We offer our sincere thanks to Rodney for his contribution to the MGAB and extend a warm welcome to James.

In 2013 and 2014 the MGAB made recommendations to the CoL on a number of important matters: on future governance arrangements; on the need for an economic, social, cultural and environmental evaluation of QVMAG's contribution to its community; and on investigation and pursuit of the opportunities to expand QVMAG's digital and new technology offering. These recommendations were then included in a brief to a working group set up by the City of Launceston in 2015 to look at, amongst other things, governance, strategic directions, operating structures and funding arrangements for QVMAG. Members of the MGAB were included in the working group. The MGAB was pleased to note that the recommendations of the working group were accepted by the City of Launceston in their entirety, namely that:

- The QVMAG Strategic Plan 2012–2017, including its guiding vision, be reviewed to ensure best alignment with the Strategic Themes of the CoL Strategic Plan 2014 and the recommendations in the report.
- Beneficial alignments with other Tasmanian museums and galleries be explored in the interests of seeking overall efficiency and equity in use of State Government funds.
- An evaluation of QVMAG be commissioned that demonstrates its economic, social and environmental value to its community and the special contribution it makes to the educational, intellectual, human, social and natural capital of its community.
- Options for establishment of an independent skills-based Board of Governance be investigated and the best option implemented.
- The organisational structure of CoL be reviewed and measures be implemented to more effectively leverage opportunities and pool resources across complementary business units.

- QVMAG brand culture and profile be revisited and strengthened, including repositioning for tourism (local, state, national and international).
- QVMAG be provided with specific funding to assess the advantages offered by rapidly evolving digital technology to widen its audience and improve its operational performance and efficiency.

The MGAB understands that all the working group's recommendations for QVMAG are now to be included as part of an overall review of the City of Launceston's cultural offering and strategy, which is expected to be completed during the 2016-17 financial year.

With future governance and oversight structures still yet to be decided upon, a number of members of the MGAB have agreed to extend their fixed-term appointments, for which appreciation is expressed.

Neil MacKinnon, Chairman

## Aboriginal Reference Group

The Aboriginal Reference Group (ARG) provides guidance and advice to QVMAG on all matters regarding Tasmanian Aboriginal representation, including exhibitions, collections and general enquiries.

All loan requests for Tasmanian Aboriginal material are raised with the ARG, as are requests for viewing our Aboriginal collections with often an ARG member present.

Each year the ARG actively participate in our NAIDOC Week events. This year we announced the commencement of the *Gallery of the First Tasmanians* which will be located at the Art Gallery. The ARG has worked closely with QVMAG staff on the development of the exhibition and supported the Project Manager, Greg Lehman.

The Aboriginal Reference Group members for 2015-16 were: Aunty Patsy Cameron (Chair); Lola Greeno; David Gough; Denise Robinson; Vicki West; and Damien Quilliam (QVMAG).

Richard Mulvaney, Director

## QVMAG Arts Foundation

The QVMAG Arts Foundation has had another successful year. A highlight has been the selection of Rick Amor's painting of *Erith and Deal Islands in Bass Strait*, for the Masterpieces for Tasmania Fund. The fund was established two years ago to provide for the acquisition of significant works of Australian art to be added to the permanent collection. In March of this year, noted art historian and administrator Gavin Fry spoke on the artist and the painting before a packed audience at the Art Gallery.

The Foundation assisted in the acquisition of the following works:

Rick Amor

*Erith and Deal Islands*, 2014

Raymond Arnold

*Elsewhere*, 2015

Michael Muruste

*Eastern inlet #2*, 2003

The Foundation is deeply indebted to Arts Tasmania and the many individual donors that made this possible; also for the ongoing support of Professor Coleman O'Flaherty. Under the leadership of David Henshaw the Herbert Scott Society has had another successful year, with a membership of 48 at year's end. Similarly, in October 2015 members of the Foundation accompanied QVMAG Director Richard Mulvaney and members of the QVMAG Friends on a tour of leading regional galleries in Queensland.

My sincere thanks are extended to fellow members of the Foundation: Mr Leigh Myers, particularly in his role as Treasurer; Mrs Carol Westmore; Mrs Anne Holyman; Mr David Henshaw; Mrs Janet Tomlinson; Mrs Caryl McQuestin; Mrs Samantha Hogg; Mrs Catherine Pearce; Mrs Jenni Chapman; and Mr Julian von Bibra. Final thanks are due to our Director, Richard Mulvaney, for his guidance throughout the year, and the support given by Leila Wagner, Marilyn Heritage, Tamara Clark and Belinda Cotton.

Dr Keith Adkins, Chairman

## QVMAG Friends

QVMAG Friends have continued to support QVMAG throughout the 2015–16 year.

Our contributions have supported the following: a new interactive gallery space *ArtPlay* that allows our young people (and those young at heart) the joyful exploration of art and art making; cataloguing of the Lloyd Lindsay Jones collection; bursaries for three Gallery Guides to attend the annual conference of the Association of Australian Gallery Guiding Organisation in Adelaide from 7 to 10 October 2015; and funding the launch of the commemorative publication *For the love of it: Celebrating 30 years of Gallery Guides* on 2 June 2016. Our membership has made these contributions possible which consist of 471 memberships made up of 790 individuals and families.

Benefitting from priority invitations, QVMAG Friends have enjoyed various openings during the year – including, among others: *Tasmanian Tiger: Precious Little Remains*; *Faces of Launceston: The photography of Philip Kuruvita*; *CUSP: Designing into the Future*; *ArtRage 2015 Collection*; *On Albatross Island*; *ArtStart* exhibitions; *Beds, Books and Bandages: 125 years of Nurse Education in Northern Tasmania*; *Artist and the Collection* - Sue Henderson, Penny Mason, Anne Morrison, Sue Pickering; *Reimagined*; culminating in QVMAG's own commemorative

exhibition, *The World Inside: 125 years of the Queen Victoria Museum and Art Gallery*.

*The World Inside* featured works from all of the curatorial disciplines counterpointed by the exquisitely rendered large-format drawings of Dr Mary Scott. This was an important exhibition that celebrated the establishment of QVMAG, a cultural icon of Launceston, and its first Curator, Herbert Hedley Scott.

In November, some members of the Friends enjoyed a trip to Brisbane, taking in various galleries and museums. These trips, which are occurring annually, are valuable both for contacts with like organisations and broadening the experience of those attending.

Our Christmas Party took on a new look this year by including a concert by the *Australian Guitar Trio's Guitars* at the Art Gallery. QVMAG Friends, staff and volunteers enjoyed the evening. At the event former QVMAG Director Chris Tassell was presented with Life Membership of the Friends in recognition of his establishment of the association and ongoing support during his Directorship.

The Morning Coffee Lecture Series has continued to be popular. This is an important addition to the local history of our community as all lectures are recorded for posterity. Our speakers this year were John Hume, Annette Reed, John Dent, James Riggall, Ian Chesterman, Dr Kieren Mitchell, David Tomkinson, Nigel Forteach, Dr Mary Scott and Peter Richardson. We continue to have between 60 and 100 members attending these lectures.

The Gallery Guides celebrated their 30th Anniversary this year and marked this important milestone with an afternoon tea at the Art Gallery, where many Guides from the inception of the program enjoyed reminiscing with old friends. As previously mentioned, it also saw the launch of the e-publication of their history *For the love of it: Celebrating 30 years of Gallery Guides*.

In May, a bus trip was organised to visit Burnie Art Gallery, to see *Michaelangelo: The Exhibition* and the Burnie Regional Museum. A delicious lunch was provided by the Art Gallery and we were hosted by our QVMAG Friends reciprocal membership program recipient, Friends of Burnie Regional Museum, for afternoon tea. The 33 members who participated all enjoyed the day and we are expecting a return visit from the Friends of Burnie Regional Museum in due course.

I would like to thank and acknowledge the support received throughout the year from the QVMAG Director, Richard Mulvaney, and the administrative team of Belinda Cotton and Katrina Ross. These people are an integral part of the Friends and enable us to continue to support QVMAG.

I also wish to acknowledge the work of the QVMAG volunteers, in particular their assistance with providing drinks for the Morning Coffees and the stuffing of envelopes each month for the mail out to QVMAG Friends. There is a core of volunteers doing this work and I know they make it a fun time for all. Thank you ladies and gentlemen.

In concluding, I would also like to take this opportunity to acknowledge and thank the QVMAG Friends Committee. They have each, in their way, provided support for events and QVMAG in general. They are: Sally Coltheart (Vice-President); Jennie Chapman Caswell (Secretary and Public Officer); Mary Machen (Treasurer); Janet Tomlinson; Anne Moulden; Robin Barnes; Nora Jackson; Julian Burgess; His Worship the Mayor Alderman Albert van Zetten; and QVMAG Director Richard Mulvaney.

**Jill Dearing**, President

### Herbert Scott Society

This year members of the Herbert Scott Society enjoyed two major highlights in addition to the normal activities at QVMAG.

In early March members enjoyed a special preview of the Rick Amor painting *Erith and Deal Islands in Bass Strait*. This evening featured noted art historian and administrator Gavin Fry. As his biographer, Gavin was able to provide many insights into the work of Rick Amor (even telling us the correct pronunciation of his surname). This outstanding painting was purchased by the Arts Foundation as part of the Masterpieces for Tasmania Fund.

Our second outing, on 29 April, was a preview of the wonderful exhibition *The World Inside: 125 years of the Queen Victoria Museum and Art Gallery*. The exhibition saluted the work of Herbert Hedley Scott, QVMAG's first Curator. Our very welcome guest that night was Dr Mary Scott, who is the great-granddaughter of Herbert Hedley Scott. The exhibition was jointly arranged by Mary and she took us on a most interesting tour of the exhibition which featured a re-creation of Herbert Scott's original office at the Gallery. Many of the exhibits featured handwritten labels by Herbert Scott, which helped re-create the Gallery and Museum as it would have been 125 years ago. Members were most enthusiastic about the exhibition, which they thoroughly enjoyed, and many attended the official opening the following evening.

The other project supported by the Herbert Scott Society was the restoration of the Gladstone Eyre portrait of Samuel Sutton. An unveiling and rehang of the portrait was set down for May; however, on the date proposed, it was realised that there was still a little more restoration to be done so that evening was deferred until a date to be decided.

Many members of the Herbert Scott Society continue to be actively involved in the activities of QVMAG.

**David Henshaw**, Convenor



Above Performance artist and musician, Hellen Rose and 2015 Sydney Peace Prize recipient, artist and filmmaker, George Gittoes AM presenting Q&As at the 2015 QVMAG Peace Prize lecture, 2 July 2016.



# Partnerships

## The Royal Society of Tasmania

Drawing its inspiration from the original Royal Society founded in London in 1660, The Royal Society of Tasmania is the oldest Royal Society outside the United Kingdom, having had a continuing existence since 1843. Its Northern Chapter, centred in Launceston, meets at 1.30pm on the fourth Sunday of the month, from February to November, at the QVMAG Meeting Room at Inveresk. The Royal Society of Tasmania welcomes membership from anyone interested in the history, challenges and future implications of all areas of science.

Among the many publications produced by the Society is its most recent book *The Library at the End of the World: Natural Science and its Illustrators*, detailing the natural history art found in the Royal Society's rare book collection, currently held in the University of Tasmania Library. The Society's books, cards, calendars, and the northern and southern lecture programs are available through its website <http://rst.org.au/>. The *Papers and Proceedings* of the Society are published annually, and previous *Papers* are available at <http://eprints.utas.edu.au/view/collections/PapersProceedingsRoyalSociety.html>

The Northern Chapter creates a good deal of activity through its monthly meetings, contributing to the intellectual life of the city and of northern Tasmania. The monthly lectures are open to the public for a small entrance fee, and are free to all Royal Society members. A reduced entrance fee applies to QVMAG Friends.

Field trips are organised periodically to research institutions, interesting historical sites and other facilities in the north.

In 2015–16, lecture topics, presented by experts in their field, included the evolution of joint replacement surgery, the science of light, life in Tasmania's island lighthouses, new agricultural crops for Tasmania, undersea volcanoes, the origins and use of radar technology, Antarctica's response to a series of great natural experiments, the intricacies of the honey bee, improving conservation outcomes for rare Tasmanian orchids, and curbing an overenthusiastic immune system.

We look forward to your company in 2016–17.

Chel Bardell, Honorary Secretary

## Oral History Tasmania

It has been another busy year for Oral History Tasmania. In September 2015 we held a very interesting seminar at the Museum. Dr Thomas Gunn spoke on the topic: *Reel or real? Writing the history of the Launceston Film Society*. His talk looked at the challenges of using oral histories when written records are missing, and then what happens when the written records are found that contradict the oral material: in particular, the need to decide between memory and record. Dr Terry Whitebeach talked about her DVD and books based on oral histories of South Sudanese refugees. Her paper, *From Loa to Launceston & from Kenya to Kingston: An Oral History Project with South Sudanese Refugees (Tasmania 2011–2014)* looked at the refugee experience, and especially why she used different literary forms to disseminate the accounts for different audiences. Finally, Dr Jai Paterson spoke about *Launceston's Gasworks site, or oral history without recordings*, where a quick project, requiring oral history, focuses less on the importance of the individual interviewee and more on the humanity they bring to what would otherwise be a purely industrial story. Their talks have been published in the Oral History Tasmania newsletter, *Real to Reel*.

Several oral history workshops have been held, including one at the Museum in May, which as usual attract participants from around the State. These workshops are our major activity apart from the seminar and not only help to train future oral historians but allow the Museum to reach into the wider community.

At the time of writing, Oral History Tasmania is planning a joint seminar with the Launceston Historical Society to be held at the Museum in September.

Jill Cassidy

## Launceston Historical Society

The Launceston Historical Society has continued to hold its monthly meetings at the Inveresk site on the third Sunday of each month in February and April to November.

There have been many notable speakers in the past year. In September, President of the Society, Marion Sargent, spoke about old cemeteries in Launceston and in October John Watts shared his enthusiasm for the history of the George Town area with his talk on the development of leading lights in the Low Head area, which enabled the safe passage of vessels up the Tamar River. In November Anne Neale spoke about Henry Edwin Bridges, builder, architect, civil engineer, bankrupt and swindler, who was responsible for the design of the Launceston Town Hall.

At the AGM in February, a DVD was shown of Sir Tony Robinson's episode of *Tour of Duty* which related to Launceston and district. It included footage of the *Tour of Duty* roadshow held at the Museum.

In Australian Heritage Week in April, Craig Deayton talked about Australia's role on the Western Front during World War I and focussed particularly on how our tendency to mythologise certain battles and people obscures a more interesting truth. John Dent spoke about the Kerry Lodge Archaeology Project in May. Two excavations at the Kerry Lodge site have revealed artefacts and information on the history of this area. The annual Pugh Day lecture in June, jointly sponsored by the LGH Historical Committee and the Launceston Historical Society, was given by Dr John Paull and Aileen Pike who spoke on

the topic *Persistence pays: finding Dr Pugh's missing journal*. They told us a fascinating story about the long but ultimately successful hunt for the diary of William Russ Pugh, the Launceston doctor who was the first to use anaesthesia in the Southern Hemisphere. In July, Georgia Fountoulaki's topic was *Tasmanian Culture: Greek Connections*, and in August Susan Aykut talked about *Turkish Baths in Launceston*.

The latest of our annual excursions took place on 29 November 2015. This was a trip to Devonport to visit the Bass Strait Maritime Centre and Home Hill, the home of Tasmania's only Prime Minister, Joseph Lyons, and his wife, Dame Enid Lyons, a notable federal politician in her own right.

The John West Memorial Lecture is held in March, and this year the speaker was Michelle Grattan, noted Australian journalist and chief political correspondent with *The Conversation* whose topic was *The Power of Small Voices: The Struggle for the Senate's Centre*, about the role of minority parties and independents in the Senate. This was particularly apt, as on the very day of the lecture, the Senate passed significant changes to the electoral laws after much public debate and a marathon sitting, which Michelle had attended before travelling to Launceston. Over 200 people attended the lecture, held at the University of Tasmania campus in Launceston.

The Launceston Historical Society thanks QVMAG and its staff for their generous support and looks forward to another great year in 2016–17.

Marion Sargent, President



Above National Science Week 2015 *Stars in the Backyard* sessions were a partnership between QVMAG Planetarium staff, volunteers, and members of the Astronomical Society of Tasmania.

# Outreach

## Outward Loans

The significance of the QVMAG collections is recognised worldwide. Many requests to borrow items for research or an exhibition are received from other institutions. QVMAG acknowledges this as an opportunity to provide improved access to its collections. Items on loan during the 2015–16 financial year are detailed below.

### Library

Ten loans were provided to other institutions as part of the national Inter Library Loan network.

### History

Museum of Applied Arts and Sciences (Powerhouse Museum)—Tasmanian Aboriginal shell necklaces.

National Portrait Gallery—Death masks, original Beattie labels and Thomas Bock sketchbook.

Tasmanian Museum and Art Gallery—Heard Island blubber press, bottle from the *Sydney Cove*, archaeological material from Wybalena & Brown Bess flintlock musket.

Ulverstone History Museum (Central Coast Council)—Material relating to Gunns Plains Caves.

Burnie Regional Museum—Polio calipers and Fijian tattooing instrument.

Scotch College (David Marsden)—Apple crate labels, printer's proofs, cordial labels and early billheads.

Tasmanian Horse Drawn Vehicle Foundation—Horse-drawn lorry.

Tasmanian Wool Centre, Ross—Zegna wool trophy.

Geelong Maritime Museum (Friends of the Cerberus Inc.)—Bell from *HMVS Nelson*.

Norfolk Island Government House—Copper hot water urn.

St Helens History Room—Collection of material from Chinese tin mining sites in north east Tasmania.

Highfield Historic Site (Tasmanian Parks and Wildlife Service)—Collection of furniture and ceramics from the Ford collection.

Furneaux Historical Research Association—Collection of material from the *Sydney Cove* wreck.

Police Museum, Hobart—Launceston Police helmet badge.

Beaconsfield Mine & Heritage Centre—Collection of archaeological material from the York Town site.

National Trust of Tasmania—Furnishings and miscellaneous historical objects.

### Natural Sciences

Phoenix Environmental Sciences WA—Three arachnid specimens.

Australian Museum Research Institute—69 registered lots of anaspides material.

Mickiewicz University, Poland—14 vials of arachnids, family Thomisidae.

National University, South Korea—403 vials of beetles, family Staphylinidae.

Auckland War Memorial Museum, New Zealand—203 vials of hymenoptera (parasitic wasps).

### Visual Arts and Design

Kevin Connor  
*King Street, Newtown*  
oil on canvas  
to Mosman Art Gallery, Sydney for *Destination Sydney*  
December 2015 to February 2016

Tom Roberts  
*The Mirror*  
oil on canvas  
to National Gallery of Australia, Canberra for the Tom Roberts retrospective  
4 December 2015 to 28 March 2016

Kevin Lincoln  
*Self portrait* 2004  
oil on canvas  
to Ballarat Art Gallery for *Kevin Lincoln: The eye's mind*  
23 April to 19 June and touring to QVMAG 9 July to 4 September 2016

Kevin Lincoln  
*Bowl with whisk and ladle* 2004  
oil on canvas  
to Ballarat Art Gallery for *Kevin Lincoln: The eye's mind*  
23 April to 19 June and touring to QVMAG 9 July to 4 September 2016

Edwin La Dell  
*The Tower of London* 1946  
coloured lithograph  
to Scotch Oakburn College, Launceston for *Printed Stuff*  
6 to 30 May 2016

Jane Nash  
*Lady with cat and bird*  
coloured lithograph  
to Scotch Oakburn College,

Launceston for *Printed Stuff*  
6 to 30 May 2016

Unknown  
*Flowers in a vase*  
coloured lithograph  
to Scotch Oakburn College, Launceston for *Printed Stuff*  
6 to 30 May 2016

Thomas Bock  
Sketchbook containing  
*posthumous studies* c.1835–1941  
pencil

Thomas Bock  
Charles Routley's skull after dissection and following execution c.1830  
To National Portrait Gallery, Canberra for *Sideshow Alley Infamy, The Macabre & The Portrait*

Robert Dowling  
*Portrait of Henry Reed* 1860s  
oil on canvas  
to Heide Museum of Modern Art, for *Modern Love: The Lives of John and Sunday Reed*

John Dixon, over a photograph by George Cherry  
*Bishop Nixon* 1860  
oil over a photograph over two layers of canvas  
to Art Gallery of New South Wales and travelled to Queensland Art Gallery of Modern Art  
For *The Photograph and Australia*

Tasmanian Museum and Art Gallery, for *Tempest*

Lionel Cowen  
*Interrupted Reading*  
oil on canvas

S. Curr  
*The Abandonment*  
oil on canvas



Joshua Higgs Jnr  
*Low Head, River Tamar*  
oil on canvas

Unknown Artist  
*Ship in a Storm at Sea*  
oil on canvas

Unknown Artist  
*Wild west coast of the North*  
country  
oil on canvas

Unknown Artist after H.E.  
Dawe  
*The Power of Maternal*  
Affection  
engraving: mezzotint &  
etching on paper

Auguste Demenit Sc  
*(Sea Species)*  
engraving with watercolour

Adolph Friesf  
*(Sea Urchins and insects)*  
engraving with watercolour

Unknown Artist  
*Sea Urchins & Insects*  
engraving with watercolour

## Community and Professional Activities

### History

Jon Addison attended the International Congress of Vexillology, Sydney, 5 to 9 September.

Jon Addison attended the opening of the Chinese Cultural Centre, Moonah, and part of the MONA Effect Seminar, on 18 September.

Jon Addison attended the opening of the Spirit of ANZAC Centenary Experience and spoke about QVMAG's Model T Ford Ambulance on 26 September.

Jon Addison took part in the Centre of Colonialism and its Aftermath Collections and Humanities Research

workshop with UTAS on 12 February.

Jon Addison consulted with staff at the Tamar Wetlands Centre on Tamar Island in March.

Jon Addison participated in excavation work for the Kerry Lodge Archaeology Project and performed research work with the Archaeology Team in March.

Jon Addison presented a talk on Kerry Lodge Archaeology for 'The Thursday Group' at the Christadelphian Hall, Western Junction in April.

Jon Addison participated in the filming of the *Sydney Cove* Longboat reenactment, for ABC's *Catalyst* program in May.

### Natural Sciences

David Maynard presented a talk entitled *The Tamar River Estuary* to Exeter Primary School Year 4 students on 2 September.

David Maynard presented a talk entitled *The Tamar River Estuary* to Beaconsfield Primary School (mixed ages) on 15 September.

David Maynard presented a talk entitled *Environmental Leadership* to IMAS (UTAS) on 21 September.

David Maynard presented a talk entitled *The Tamar River Estuary* to Riverside Primary School Year 4 on 23 September.

David Maynard and Simon Fearn presented a talk entitled *Classification and Identification* to West Launceston Primary School Year 3 on 9 November.

Simon Fearn presented a talk entitled *Reptile Interpretation* to St Patrick's College in January.

Simon Fearn and Judy Rainbird presented a public talk on World Wetlands Day in January.

David Maynard presented a talk entitled *Tamar Habitats and Inhabitants* to a Rotary Tag Along Tour in February.

Simon Fearn presented a talk entitled *Expert Entomology Advice and Follow Up* to the Launceston Field Naturalists' Club in February.

### Visual Arts and Design

Bridget Arkless worked with QVMAG Education to co-ordinate the delivery of a Gifted and Talented day for northern Tasmanian primary schools in association with Tasmanian Association for the Gifted on 17 March.

### Planetarium

Martin George presented a talk to the Aurora Australis Festival in Bothwell entitled *The Life of Grote Reber* on 29 August.

Martin George presented a talk to Riverside Probus Club entitled *Modern Developments in Astronomy* on 28 October.

Martin George presented a talk to the staff of the Launceston General Hospital entitled *The Science of Light* on 23 February.

Martin George attended the first week of the General Assembly of the International Astronomical Union in Honolulu, Hawaii, 3 to 7 August.

Martin George attended the foundation ceremony of the new planetarium and observatory complex in Songkhla in Thailand on 23 September.

Martin George attended an astronomical history conference in Ao Nang in Thailand, 30 November to 1 December.

Martin George attended the annual meeting of the Australasian Planetarium Society in Wellington, New Zealand, 4 to 5 April.

Martin George attended the conference of the International Planetarium Society in Warsaw, Poland, 18 to 24 June.



# Collaborations

QVMAG continues to enjoy successful partnerships with a number of organisations. Through these collaborations, QVMAG patrons enjoy access to an enriched program of activities. These groups include:

ABC Television	City of Launceston	(Questacon)	The Bureau of Meteorology
ABC Northern Tasmania	Contemporary Art Tasmania	Natural History Museum	The Crazy Scientist
Access Arts	Country Women's	Newstead College	The Examiner Newspaper
ANZAC Centenary Local	Association in Tasmania	NRM North	The Gordon Darling
Grants	CSIRO	NSW Government - Trade &	Foundation
Art Gallery of NSW	Definium Technologies	Investment	The JamFactory
Art Gallery of SA	Design Centre Tasmania	Oral History Australia	The Launceston Historical
Arts at Work	Devonport Regional Gallery	(Tasmania)	Society
Arts Tasmania	Duck Reach Conservation	Pennicott Foundation	The Mercury
Astronomical Society of	Group	Pete Mattila	The Mornington Peninsula
Tasmania Inc.	Environment Institute of	Plimsoll Gallery	Regional Gallery
Australia Council for the Arts	Australia and New Zealand	Plomley Foundation	The Railway Café
Australian Centre for Design	Foot and Playsted	Print Council of Australia	The Royal Society of
Australian Geographic	Flying Colours Printing	Purves Environmental Fund	Tasmania
Australian Government	Friends of the Launceston	QVMAG Aboriginal Reference	The Tea Room Café
- Bureau of Meteorology	Mechanics' Institute	Group	Theatre North at the Princess
Australian Government	George Gittoes AM and	QVMAG Arts Foundation	University of Adelaide
- Department of the	Hellen Rose	QVMAG Friends	- Australian Center for
Environment and Energy	Gordon Darling Foundation	QVMAG volunteers	Ancient DNA
Australian Government	Government of Tasmania	RMIT University - Exertion	University of Stirling - Stirling
- Inspiring Australia	Government of Tasmania	Games Lab	Management School,
Australian Government	- Department of Primary	Royal Artillery Association of	Scotland
- National Collecting	Industries, Parks, Water and	Tasmania	University of Tasmania
Institution Touring &	Environment	Royal Society of Tasmania	- Academy of the Arts
Outreach Program	Hawthorn Football Club	Sawtooth ARI	University of Tasmania
Australian Government	Heide Museum of Modern Art	South Australian Government	- Riawanna Centre
- Visions of Australia	Heritage Bank Isle	- Arts SA	University of Tasmania - Save
Australian Government	Herpetological Society of	South Australian Museum	the Tasmanian Devil Appeal
- Visual Arts Craft Strategy	Tasmania	Southern Cross Television	University of Tasmania
Australian Institute for	Ilford	Startup Tasmania	- School of Architecture
Aboriginal and Torres Strait	Interweave Arts	Streets Alive	University of Tasmania
Islander Studies	James Boag	Tamar Community Peace	- School of Computing
Australian Institute of	Junction Arts Festival	Trust	University of Tasmania
Physics	Latrobe University	Tamar Valley Collectors	- School of Health Sciences
Australian Museum	Launceston General Hospital	Group	University of Tasmania
Australian Wine Research	Launceston Historical	Tasdance	- Tasmania College of the Arts
Institute	Society	TasGas	University of Tasmania
Autech	Manchester University, UK	Tasmanian Association for	- Tasmanian School of
Bell Bay Aluminium	MONA	the Gifted	Business
Bett Gallery	Museum of Contemporary Art	Tasmanian Broadcasters	University of Tasmania
Bitlink	Museums Australia	Tasmanian Community Fund	- Tourism Research &
Bookend Trust	Museums Australia	Tasmanian Museum and Art	Education Network (TREND)
Breath of Fresh Air	-Tasmania	Gallery	University of Technology
Bundanon Trust	National Gallery of Australia	Tasmanian Parks and Wildlife	Sydney
Burnie Regional Art Gallery	National Gallery of Victoria	Service	Western Australian Museum
Burnie Regional Museum	National Science &	Tasmanian Polytechnic	Woolston Printing
	Technology Centre	Tasmanian Regional Arts	WIN Television
		TasWater	Winston Churchill Memorial
		Team Textiles	Trust
		Ten Days on the Island	
		The Academy Gallery	
		The Archer Trust	

Left Object from the New Britain Shell collection donated by Ian Sanderson.



# Support

## Corporate Sponsorship and Special Purpose Grants

Beyond the ongoing funding received from the City of Launceston and the Tasmanian State Government grant received through Arts Tasmania, QVMAG has continued to attract substantial levels of sponsorship and support towards a variety of projects.

## Grants

### Plomley Grant List

The Management Committee of the Plomley Foundation held its two biannual meetings on 30 September 2015 and 9 March 2016. The committee consists of Mr Robert Dobrzynski, General Manager of the City of Launceston; Mr Richard Mulvaney, Director of QVMAG; Mr Andrew Parsons, QVMAG Library Coordinator; and Ms Jenner Plomley.

At the meeting of 30 September 2015, the Committee approved funding for three projects.

Bridget Arkless of QVMAG received her second funding grant to continue photographing works of art, held by QVMAG, by Bea Maddock, from the period 1984 to the present. The images are for inclusion in the planned publication *Bea Maddock Catalogue Raisonné Volume II 1984 to the present*. Bridget's first funding grant in October 2013 realised the photographing of 894 of Bea Maddock's works.

Professor Peter Davies was granted funds to research historical and traditional information on three key seasonal migration routes of the Great Oyster Bay, Northern Midlands/ Stony Creek and Big River Indigenous nations. Professor Davies' research will see two permanent sculptural structures installed in the Northern Midlands landscape, production of a booklet and a web page, publication of a science article and a community launch at Ross.

Lynn Davies of the University of Tasmania Library received a grant to digitise the 19th century sketchbooks of Catherine Penwarne Mitchell that are held by the UTAS Library Rare collections. An article on the project was produced in issue 145 (February 2016) of *Island* magazine.

At the meeting of 9 March 2016, two projects were approved.

Jon Addison of QVMAG received funding to employ Dr Nic Haygarth to research and write the text for a book featuring the photographs of Launceston photographer HJ King. This project came about as a result of the donation to QVMAG of a significant number of previously unseen photographs, primarily in negative form, that represent the bulk of King's photographic output.

Although QVMAG previously already held a significant collection of HJ King's work, most of this was in the form of photographic prints and lantern slides. The book will disseminate new research about HJ King, who is presently unrecognised as an important photographer.

The Friends of the Launceston Mechanics' Institute received funding to catalogue the holdings of the Launceston Mechanics' Institute Library collection. The collection consists of 10 800 fiction volumes, 9665 non-fiction volumes and 1586 periodical volumes. The holdings will appear online in Trove. During his lifetime, Brian Plomley used the Mechanics' Institute Library collection to research a number of his journal articles.

### General

Tasmanian Community Fund:	
<i>The Gallery of the First Tasmanians</i>	\$214 060

### History (other than Plomley Grants)

Philip Archer Trust:	
Textile Industries Interpretation Project	\$27 360
Northrop Loom Restoration Project	\$10 000
Plant Shop Reorganisation Project	\$16 829

Armitage Trust:	
Ventriloquist dummy acquisition	\$7500

Tasmanian Parks & Wildlife Service:	
Macquarie Island Collection cataloguing	\$15 000

National Cultural Heritage Account:	
Purchase of Tangye Engine	\$200 000

### Natural Sciences (other than Plomley Grants)

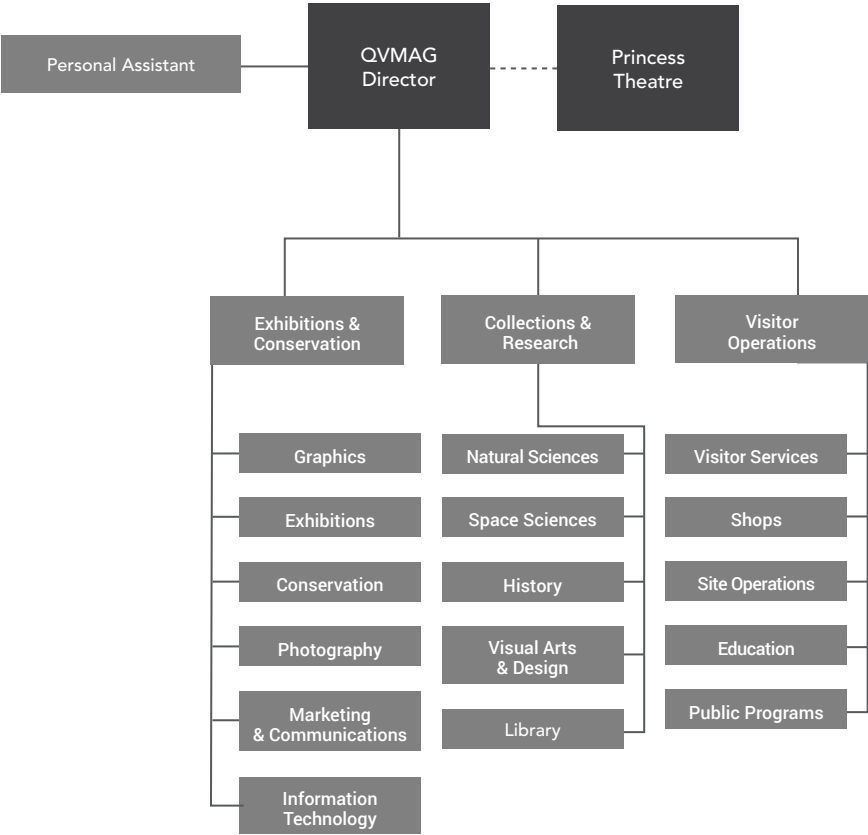
The Department of Industry, Innovation and Science Grant of \$19 000 to support National Science Week activities. Funds were also received by NRM North and Bell Bay Aluminium to support these activities.







# Structure



# Staff

**Administration**

Director  
Richard Mulvaney, BA,  
BLitt, Grad Dip Mus  
Stud

Personal Assistant  
(Director)  
Leila Wagner

Personal Assistant  
(Director)  
Meryl Heritage

**Collections and Research**

Collections and  
Research Manager  
Martin George, BSc  
(Hons) MASA

Library Coordinator  
Andrew Parsons, BA,  
GradDipLibInfoStudies

Curator, History  
Jon Addison, Dip.Mus.  
Perf, BA (Hons), MA\*

Collection Officer  
History  
Louise James, BA, Dip.  
Ed\*

Research Officer  
History  
Ross Smith

Technical Officer  
History  
Shirley Leeming\*

Technical Officer  
History  
Katrina Ross\*

Curator, Natural  
Sciences  
David Maynard, BApp  
Sc (AMC) (Fisheries),  
ADAS (Res 2)  
Commercial Diver, IMCA  
ROV pilot/technician II

Collection Officer  
Zoology  
Simon Fearn BSc\*

Collection Officer  
Zoology  
Tammy Gordon, BSc\*

Collection Officer  
Zoology  
Judy Rainbird,  
CertTaxid\*

Curator, 19th Century  
Australian Art  
Yvonne Adkins, BA  
(VA), GradDipFA\*

Curator, 20th Century  
Australian Art  
Bridget Arkless, BA,  
GradDipMusStud\*

Curator, Contemporary  
Australian Art  
Damien Quilliam, BA,  
BCA (Hons)

Registrar, Visual Arts  
and Design  
Rosalie Kelly, Grad Dip,  
Mus Stud, Grad Dip  
Aust, Archaeology, BA  
Arts/Humanities\* (to 13  
June 2016)

**Exhibitions**

Exhibitions Manager  
Andrew Johnson, BA  
(Industrial Design)

Exhibitions Coordinator  
Alisanne Butler

Graphics Coordinator  
Renée Singline, Dip  
Graphic Design

Graphic Designer  
Louise French\*

Senior Conservator  
Amy Bartlett, Master of  
Arts (cultural material  
conservation), Post  
grad cert (photo Mat  
Cons), Grad Dip (Arts  
Admin), BA

Conservator  
David Thurrowgood, BA  
(Journalism), BAppSCI  
Conservation of  
Cultural Materials

Photographer  
John Leeming\*\*

Gallery Officer  
Roy Mathers

Gallery Officer  
Jeff Burgess\*, BA Visual  
Arts

Exhibitions Officer  
Tony Mitchell\*

Maintenance Officer  
Dan Kershaw\*, BA  
(Hons) Visual Arts

Information and  
Technology Coordinator  
Mark Gordon

Information and  
Technology Officer  
Chris Arkless\*

Marketing and  
Communications  
Officer, Tamara Clark,  
BA (PR, Film)

Marketing and Media  
Officer, Irene Burlein  
(to November 2015)

**Visitor Operations**

Manager, Visitor  
Operations  
Janet Keeling, Post  
Grad Cert M'ment

Science and History  
Education Officer\*  
Kellie Cook, Bachelor of  
Education, Bachelor of  
Teaching (to April 2016)

Science and History  
Education Officer  
Ian Edmondson,  
Bachelor of Teaching,  
Bachelor of  
Environmental Design\*  
(from May 2016)

Art Education Officer  
Richard Buck, Bachelor  
of Education, Bachelor  
of Fine Arts (until  
November 2015)\*

Left National Science Week at the Art Gallery.

Art Education Officer  
Kate Collins, Master  
of Education, Post  
Grad Cert in Cultural  
Heritage, Bachelor  
of Arts (Hons) (from  
January 2016)

Museum Services  
Officer  
David Cook, Assoc. Dip  
Elec Eng.

Museum and Art Gallery  
Shop Coordinator  
Christine Gleeson

Bookings and  
Administration Officer  
Louise Towns, Cert III in  
Financial Services

Public Programs  
Coordinator  
Belinda Cotton, BA

Visitor Operations  
Coordinator  
Anna Wilkins, BA (Hons)  
in Performance Writing,  
DipBusiness and  
Marketing

Administration Officer  
Lauren Eklom, Cert III  
Bus Admin\*

QVMAG Friends  
Administration Officer\*  
Katrina Ross, BA (Hons)

**Attendants**

Pauline Black\*  
Robyn Cottell\*\*  
Ingrid Dance\*  
Sarah Darnell\*\*  
Bill Evans, BFA, Grad  
Dip FA, BPA (Music),  
Assoc. Dip, PA (Music)\*  
Rhys Endall\*\* (to  
January 2016)  
Paul Farrell\*  
Jeff Francis\* (to August  
2016)  
Christa Gorjup\*  
Aaron Lyall\*\*  
Sandra Maxwell, BA\*  
(to November 2015)  
Heather McInnes\*  
Haben Melke, Dip Comp  
Eng\*\*  
Judy Rainbird,  
CertTaxid\*\*  
Phoebe Reszke,  
BCA, Dip Library and  
Information Services\*\*  
Martin Spohn  
Cindy Thomas\*\*  
Katherine Taylor, BSc  
Sue Wynne\*\*

Denise Fela\* (to  
October 2015)  
Darryn Greene\*\* (to  
October 2015)  
Cheryl Smee\*\* (October  
2015 to August 2016)  
Don Keddle\*\* (from  
June 2016)  
Trish Marshall\*\* (from  
June 2016)  
Karen Murgatroyd\*\*  
(from June 2016)

**Honorary Research  
Associates**

**Conservation**

Dr Constanza Angelucci  
David Hallam  
Dr Daryl Howard  
Dr Kieren Mitchell

**History**

Mrs Jill Cassidy  
Mrs Rhonda Hamilton  
Ms Jai Paterson  
Mr Peter Sims

**Museum Information  
Services and  
Technology**

Mr Mark Davis

**Natural Sciences**

Mr John Douglas  
Mr Ralph Bottrill  
(Geology)  
Emeritus Professor  
Nigel Forteach  
Dr Robert Mesibov (to  
June 2016)  
Professor Andrew  
Osborne  
Dr Kathryn Pugh  
Mr Chris Tassell

**Visual Arts and Design**

Dr Deborah Malor  
Irena Zdanowicz

**Volunteers**

**Natural Sciences**

Lachlan Bovill  
Megan Dykman  
Darcie Hunt  
Helen Jones  
Julie Nermut  
Josephine Osborne  
Deborah Osterhage  
Amelia Pearson  
Anne Tolson  
Andrew Tuma  
Cher Harte  
Joe Kelk

**History**

Jennifer Barker  
Jill Cassidy

Linda Clark (to 30 June)  
Vicky Cooper  
Sophie Crooks  
Sabina Davis  
Robert Evans  
Georgia Fountoulaki  
Robyn Gibson  
Virginia Greenhill  
Rhonda Hamilton  
Lee Harper  
Caroline Heine  
Caroline Heine  
Piers Johnson (to 1  
April)  
Dan Kershaw  
Sarah Lillywhite  
Evan Livingstone-  
Thomas  
Maureen Mann  
Pete Mattila (to 1 April)  
Jai Paterson  
Ann Power  
Katrina Ross  
Elizabeth Smedley  
Mary Stary  
Cindy Thomas  
Monissa Whiteley  
Deb Wise (also VAD)  
Di Woolnough

**Planetarium**

Karenne Barnes  
Michael Booth  
Peter Brake  
Martin Harvey  
Mervyn Millward

**Visual Arts and Design**

Aunty Patsy Cameron  
Raye Chapelle-  
McSweeney  
Lola Greeno  
Christa Gorjup  
Robyn Lake  
Denise Robinson  
Barbara Valentine  
Vicki West  
Deb Wise (to 13 June  
2016)

**Library**

Anna Lynde  
Brooke Price  
Phoebe Reszke  
Elaine Whelan  
Jackie Willis

**MIST**

Bruce Andrews  
Nathaniel Bott  
Michael Cruse  
Joshua Cutlan  
Steve East  
Bridgette Kaminski  
John Kendall  
Chris Lawrence  
Troy Merritt  
James Riggall

Joe Robinson  
Hannah Waterhouse (to  
31 August)

**Gallery Guides**

Sally Coltheart  
Sally McShane  
Jill Macpherson  
Pam Palmer  
Lesley Reed  
Susi Reid  
Patricia Roberts  
Annie Robinson  
Di Whitmore  
Shirley Watson

**Museum Guides**

Belinda Corbett  
Ingrid Dance  
Vicki Dewsbury  
Robert Evans  
Kathy Farr  
Lynn Kelly  
Gulcan Kilinc  
Margrit Korosi  
Maureen Mann  
Victoria Maxwell  
Baigalmaa Melrose  
Nicholas Pearce  
Sharon Roberts  
Mary Stary  
Rosemary Verbeeten  
Susan Wallis  
Hannah Waterhouse

**Exhibitions**

Nick Cummings

**Conservation**

Deb Ward  
Caroline Heine  
Katrina Ross  
Margaret Barlow  
Olive Bull  
Jim Carroll  
Graeme Edwards  
Russell Hogarth  
Ken Smith

**Education**

Ashley Bird  
Sally Coltheart  
Belinda Corbett  
Ingrid Dance  
Vicki Dewsbury  
Kathy Farr  
Lynn Kelly  
Gulcan Kilinc  
Margrit Korosi  
Jillian MacPherson  
Sally McShane  
Pamela Palmer  
Lesley Reed  
Susi Reid  
Tricia Roberts  
Annie Robinson  
Sally Spencer  
Kate Turner

Rosemary Verbeeten  
Susan Wallis  
Shirley Watson

**Public Programs**

Shirley Anthony  
Judy Gardner  
Coralie Griffiths  
Brenda Harrison  
Joan Jacks  
Vera Mantou  
Margot Martin  
Margaret Mullins  
Audrey Partridge  
Alan Peacock  
Evelyn Peacock  
Helen Scott Young  
Jenny Taylor  
Jennifer Tidey  
Christine West (until 30  
November)  
Beverley White

\* Indicates part time  
position  
\*\* Indicates casual  
position

# Statistics

## 2015–16

Total QVMAG attendance	133 663
Website visits	975 957
Planetarium	6 905
Education	10 389
Exhibitions and displays produced	20
Exhibitions toured	1
Touring exhibitions	10
Public programs	450
Donations	95
Items added to collection databases	1578
Volunteers	101

# Appendices

## Appendix 1

### Right to Information

The Right to Information Act 2009 commenced on 1 July 2010 and gives members of the public the right to obtain information contained in the records of the Government and public authorities. The position authorised to make decisions under the Act is the General Manager of the City of Launceston.

No request for access was received during the 2015-16 financial year.

## Appendix 2

### Major Acquisitions for 2015–16

#### Visual Arts and Design

Rick Amor  
*Self portrait at 64*, 2012  
oil on canvas  
Purchased with funds from the Turner Ralph Bequest, 2015

Rick Amor  
*Erith and Deal Islands*, 2014  
oil on canvas  
Purchased by the people of Tasmania through the Masterpieces for Tasmania Fund and the QVMAG Arts Foundation, 2015

Raymond Arnold  
*Elsewhere*, 2015  
etching on paper  
Purchased by the QVMAG Arts Foundation and the Arts Tasmania Challenge Matching Scheme, Tasmanian State Government, 2015

John Campbell  
*View of Launceston* 1881  
oil on canvas  
Purchased with funds from the Turner Ralph Bequest, 2015

Leoni Duff  
*Considering my landscape*, 2016  
oil on canvas  
Purchased with funds from the Turner Ralph Bequest, 2016

George Gittoes  
*Civilisation*, 2015  
acrylic on canvas  
Purchased with funds from the Turner Ralph Bequest, 2015

Michael Muruste  
*Eastern inlet #2*, 2003  
oil on canvas  
Purchased by the QVMAG Arts Foundation and the Arts Tasmania Challenge Matching Scheme, Tasmanian State Government, 2015

Frederick P Nodder  
Hand-coloured copper engravings:  
Black swan

*Cygnus atratus*  
Cassowary  
*Casuaruis casuaris*  
Eastern rosella  
*Platycercus eximus*  
*Menura novaehollandiae*  
Superb lyrebird  
*Pezoporus wallicus*  
Eastern ground parrot  
*Macropus giganteus*  
Eastern grey kangaroo  
*Tachyglossus aculeatus*  
Short-beaked echidna  
*Calyptorhynchus funereus*  
Yellow-tailed black-cockatoo  
*Platycercus elegans*  
Crimson rosella  
Purchased with funds from the Turner Ralph Bequest, 2015

Richard Wastell  
*North colony charcoals on Albatross Island V*, 2015  
charcoal on paper  
Purchased with funds from the Turner Ralph Bequest, 2016

Richard Wastell  
*North colony charcoals on Albatross Island I*, 2015  
charcoal on paper  
Purchased with funds from the Turner Ralph Bequest, 2016

Denise Campbell  
*Untitled*, 1973  
oil on canvas  
Gift of Sandra Campbell, 2015

Denise Campbell  
*Untitled*, 1973  
oil on canvas  
Gift of Sandra Campbell, 2015

Denise Campbell  
*Untitled*, 1979  
mixed media on paper  
Gift of Sandra Campbell, 2015

Kevin Lincoln  
*Bowl with whisk and ladle*, 2004  
oil on canvas  
Gift of Hendrik and Julianna Kolenberg, 2015

Early 20th century wedding dress  
Gift of Rosalind O'Connor, 2015

#### History

#### Purchase

Ventriloquist 'dummy' used during WWI by Tasmanian soldier William Cecil Phelps. Purchased for \$7500 with funds from the Armitage Trust.

#### Donations

WWI letters written from Tasmanian camps c.1917  
Virginia Greenhill

WWI hospital photograph Judy Gardner	Linoleum sample from 17 Mary Street East Launceston with house plans David Cook	Photos related to the Railway career of Ken Matthews Malcolm Matthews	WWI diaries of Clarence Leslie Lee and WWII memorabilia relating to Ronald George Hoodless (prisoner of war) David Hoodless for the family of Ronald George Hoodless and Elma Benn
Convict brick from Port Arthur Dennis Barrett	WWI scrapbook/field diary of William Wilkinson (Ray) along with a substantial photographic collection relating to the Price, Wilkinson, Dickinson, Panton, Armstrong, Green, Cook and Galvin families, and collection of artefacts and ephemera relating to items Wendy Wilson	Early corset Catherine Wolfhagen	WWI Colt automatic pistol taken from a German Officer by Cpl Thomas Davidson MM of Campbell Town Thomas Rex Davidson and Geoffrey Davidson on behalf of the family of Thomas Davidson
Koertz wool press from Cormiston Farm Geoff and Carolyn Hall	Model of Henry Reed Memorial Church made from 12 200 icy pole sticks between 1973 and 1976 Geoff Ingram	Framed newspaper cutting/image of WF Pettards shop premises Brian David Harvey	South Africa Medal awarded to William Thomas Moyle, Tasmanian contingent badge, Australian Forces hat badge, German Iron Cross WWI and American propaganda Iron Cross medal Colin Moyle for the Moyle family
Five cloth samples from Kelsall & Kemp, K&K sign, Foreman's workbook from Burling Room and 22 printed grid cards Doreen Bowkett	Rolling stock catalogue (TGR 1952) and 1941 Tasmanian Government Gazette (Railways) Hedley Reynolds	Midland Hunt Club year books, photo albums c. 1906-09, ephemera and hunting horn used by Michael Rae Diana Peltzer	Gold seal used by Adye Douglas Mr Don Triffett
Woollen blanket made at Waverley Woollen Mills Jai Paterson	Framed aerial black-and-white image of the Hydro Depot at St Leonards Bruce Andrews	1950s child's swimsuit Louise Bugg	Large collection of photographic archives relating to the Hopwood family Graeme Hopwood
Terracotta slab model of the Launceston vertical gas retort building Mark Walters	Badge in green and gold from TCAE School of Nursing Andrew Osborne	Small book <i>Musical Subjects</i> by Alfred H Bowden and two pamphlets written by Robert Atkinson for Paper presented to the Mercury Literary Club Transfer from NFSA	Visitors' book from Quamby Bluff Jon Addison
Framed, hand-painted testimonial to William George Parker dated 1914 for rescue of a fellow worker (from drowning) at the Launceston Railway Workshop Jillian Gillie	Photograph of four crewmen from the boat <i>The Shearwater</i> Uptipty Shop (City Mission) Rowan Phelps	Twelve small snapshots of places around Tasmania, February 1927 Margaret Carey	Early Tasmanian Local Forces badge and child's leather shoe Lorna Lunn
Movie film of a diesel locomotive travelling on the northern lines and a CD of railway-related images Alan Guy	Working model of a beam engine built by Henry Smedley 1864 Geoffrey Smedley	Photograph envelope of snapshots of the visit of the Chinese soccer team to Launceston in 1923 Steven Wright	Set of WWI medals awarded to Nurse Ella Tucker including the Royal Red Cross 2nd Class, Gallipoli Medal and photographs Susan Elizabeth Grund and Sally Jane Fieldhouse
Three photographs of a local WWI soldier and nurses Judith Habel	Carved wooden trinket box made by a Chinese miner at Mangana and given to Jessie Tilley in 1872 Graeme Wood	Mayoral Dress, Town Clerk robes and wig and other official garb, hat and bonnet from Dorothy Edwards LCC	Leather nurses' case belonging to Kathleen Edith Lakin Ann Lade
Testimonial re. retirement of Robert Bennell 1912, 2 shuttles ex Kelsall & Kemp and 2 product tags K&K John OE Watson	Two early and important photographic images: a Pannotype thought to be of the Frost family in Westbury and a Ferrotpe of a man Westbury District Historical Society	Mounted Lake Pedder trout Alice Cordwell	Collection of bushwalking equipment and magazines Peter C Sims
Fine beaded necklace with beads spelling out 'VDL Macquarie River November 1842 Mary' Ann Ghazarian	Collection of agricultural/industrial machinery from the Tom Diprose collection Timothy Diprose	Invoices from Weedon's store at Whitemore dated between the 1890s and 1950s Andrew Perry	Burrell Road Locomotive (Traction engine) 1929 Department of Infrastructure, Energy & Resources (DIER)
Nineteen costume pieces from Tasdance productions 1983 to 2014 Annie Grieg for Tasdance	Cabinet studio portrait of two miners Edward Broomhall	Postcards of Beaconsfield Michael Macdonald	Chapel reed organ Sally Martin
Resurgam MK 111 ultralight aircraft built by donor in Launceston to design by Gordon Bedson, 1985–87 Frederick R Edginton	Bus ticket from period of decimal currency changeover Jenny Gill	Paper items relating to Nurse Clarice Frances Gillett George Gardiner	Collection material relating to the life and career of Lloyd Lindsay Jones Rosemary Anne Jones
Five boxes of Launceston Environment Centre archives Brian O'Byrne for the Launceston Environment Centre	Complete collection of musical scores by Launceston composer Cicely Kelly c. 1920–40 Robin and Tony Wilson	Boxed handkerchief set made by Tootal of Devonport Peter Sims	Wooden 1920s first aid box Terese Binns
Miscellaneous records of Musica North activities 1985–98 David Marsden for Musica North	Booklet of Testimonials — Madame Amy Kelly and research notes re local composer Cicely Kelly Judy Buckley	A Mauser riffle used in Boer War Don Moyle	Kelsall and Kemp and Patons and Baldwins sample books Gary Cleveland
Appliqued Egyptian motif wall hanging brought back from WWI by Algernon Leslie Morgan Louise James		Model of the aircraft <i>Southern Cross</i> made by Cyril Roberts Estate of Joyce Tait	Various ephemera and memorabilia relating to donor's career in restaurants and the catering industry Bernadette Annie Fischer
Ten samples of linoleum from 441 Deviot Road pre 1933 Christopher Paul and Prosser Green		Launceston Horticultural Society badge produced for the celebration of its 150th Anniversary, 1988 Ron Camplin	
		Set of Post Office scales and small weights Dr Pam Rothwell	
		Wooden stool used in the Coats Patons Factory Jeff Burgess	



Archival material relating to the  
Launceston Horticultural Society  
Launceston Horticultural Society

Embroidered cards/postcards from  
WWI

Margaret Dakin

Leather flying helmet used by Lloyd  
Jones, log books, aeroplane trophy,  
and tobacco pipe  
Jennifer Rayner

Collection of material relating to the  
anti-pulp mill campaign  
Estelle Ross

Framed portrait of A Alexander,  
founder of the Alexander Patent  
Racket Co 1925  
Launceston PCYC

Research and photographs relating to  
the Launceston Railway Workshops  
site  
Stan Merry

Records of the Keep Our Post Office  
Committee  
Don Wing

Sketches for woodcarvings by Gordon  
Cumming  
Heather Cumming

Framed poster for the Federated  
Union of Enginemen (Tasmanian  
Division)  
Pauline Duhig

Collection of small items used at the  
James Nelson Mill, Launceston  
Jure (George) Spiranovic

WWI tin hat belonging to Private  
Thomas Davidson, another tin hat  
from a later period and photographs  
Thomas Rex Davidson and Geoffrey  
Davidson on behalf of the family of  
Thomas Davidson

Travel scrap books from the collection  
of Marjorie Bligh  
Damien Blackwell

Sporting photographs and material  
relating to Clarence Leslie Lee  
Elma Benn

Pair of Tamar Knitting Mills socks  
Peter Thyne

Local textile industry material relating  
to Patons & Baldwins Ltd, and Kelsall  
and Kemp  
Barry Harding

Collection of material relating to  
the textile industry in Launceston  
including blankets and clothing  
Teresa Binns

School microscope  
Steven Annear

Large-format photographs of railway  
derailments taken by Robert Morris,  
Engineer, at the Launceston Railway  
Workshops  
Betty Weeks

Collection of local ephemera and  
woollen blanket (boxed) given to LCC  
by Tsuneichi Fujii, Textile Co CEO  
Louise Allen

## Natural Sciences

### Purchase

Butterflies (2500 in number),  
purchased from Professor Tyler

### Donations

Tropical shells (1500 in number),  
donated by Ian Sanderson

Invertebrates (419 in number),  
public donation

Fifty vertebrates, public donation

1 eastern long-neck turtle, donated  
by the Tasmanian Biosecurity Branch  
(DPIPWE)

### Library

*Historici liber de vita Christi: AC  
Pontificum omnium*, authored by  
Bartholomaeus Platina and published  
by Johannes Rubeus Vercellensis in  
Treviso, Italy in 1485. Purchased with  
Turner Ralph Bequest funds.

## Appendix 3

### Museum Exhibitions

#### Permanent

- *Tasmanian Connections: our land, our lives, our people and our past*
- *Tasmanian Tiger: Precious Little Remains*
- *Southern Skies—Astronomy in Tasmania*
- *Blacksmith Shop*
- *Transforming the Island: railways in Tasmania*
- *Phenomena Factory*
- Heritage Trail that includes the weighbridge, the signal box and the signwriters' shop

#### Temporary

- *An Adventurous Spirit - Surveyor James Scott* (Inveresk Foyer)
- *Noticing Nature*
- Photography exhibition (Foyer)
- David Malin photography competition (Rails corridor)
- *Peddle Chairs* (Inveresk Foyer)
- *The Great War 1914-18: Sacrifice and Shadows* August 2014 to August 2018
- *Faces of Launceston 20th Anniversary Show* Philip Kuruvita November 2015 to February 2016

- *Beds, Books and Bandages: 125th Anniversary of Nurse Education* October 2015 to February 2016
- *Ulysses Club Display* for AGM February to March 2016

### Touring

- *16 Legs* March to June 2016
- *Wildlife Photographer of the Year* (TEG) Presented by the Natural History Museum in London and the Australian Tour is organised by the Australian Museum. September to November 2015
- *ANZANG Nature Photography* (TEG) Presented by the South Australian Museum. September to November 2015
- *100 Years of Hydro* August to October 2015
- *CUSP - Design into the next decade* (TEG) June to August 2015

### Art Gallery Exhibitions

#### Permanent

- *A Distinctive Colour*
- *A Portrait of Colonial Tasmania*
- *Tasmania and Beyond 1870-1931*
- *Guan Di Temple*
- *Margaret Stones case artworks*
- *ArtSparks! Family Art Space*

#### Temporary Exhibitions

- *Lasting Legacy—Contemporary Tasmanian works from the collection*
- *The World Inside: 125 years of the Queen Victoria Museum and Art Gallery* April to October 2016
- *Penny Mason Artist 2015 in the Collection* October to January 2016
- *The Artist 19th century watercolours, Drawings and Prints from the collection* February to May 2016
- *New Acquisitions* June to September 2015
- *Growth Change Influence: The University Art Schools in Tasmania* August to November 2015
- *ArtHigh* July to September 2015
- *ArtRage 2015 Collection* December 2015 to April 2016
- *The Valley Collection* February to May 2016
- *Thunderbirds Fever! Community Collector* series May to July 2016
- *ArtStart* (various)

#### Touring Exhibitions

- *Stephen Bowers: Beyond Bravura* May to July 2015
- *Arthur Boyd: An Active Witness* May to July 2015
- *On Albatross Island* November 2015 to March 2016

- *William Kentridge: Drawn from Africa* May to June 2016
- Churchill Fellowship exhibition November 2015 to January 2016

### QVMAG Travelling Exhibitions

- *ArtRage 2014 Collection* Burnie Regional Gallery
- *ArtRage 2015 Collection* Plimsoll Gallery Hobart—University of Tasmania  
Burnie Regional Art Gallery

## Appendix 4

### Publications

#### Visual Arts and Design

Arkless, B 2016, 'Bea Maddock', *Imprint*, Vol 51 no. 2.

Malor, D & Quilliam, D 2015, 'Growth Change Influence: The University Art Schools in Tasmania', exhibition catalogue, QVMAG.

#### Planetarium

George, M 2015–16, 'Space', *The Saturday Mercury* newspaper (weekly throughout the year).

George, M 2015-16, 'Astronomical information', *The Examiner*, *The Mercury*, and *The Advocate* newspapers (daily throughout the year).

George, M, Orchiston, W, Slee, B & Wielebinski, R 2015, 'The history of early low frequency radio astronomy in Australia. 3: Ellis, Reber and the Cambridge field station near Hobart', *Journal of Astronomical History and Heritage*, 18 (2).

George, M, Orchiston, W, Slee, B & Wielebinski, R 2015, 'The history of early low frequency radio astronomy in Australia. 5: Reber and the Kempton field station in Tasmania', *Journal of Astronomical History and Heritage*, 18 (3).

Orchiston, W, Slee, B, George, M, & Wielebinski, R, 2015, 'The history of early low frequency radio astronomy in Australia. 4: Kerr, Shain, Higgins and the Hornsby Valley field station near Sydney', *Journal of Astronomical History and Heritage*, 18 (3).

Cuntz, M, Gurdemir, L, & George, M. 2016, 'Seasonal dating of Sappho's Midnight Poem revisited', *Journal of Astronomical History and Heritage*, 19 (1).

Orchiston, W, Orchiston, DL, George, M, & Soonthornthum, B 2016, 'Exploring the first scientific observations of lunar eclipses in Siam', *Journal of Astronomical History and Heritage*, 19 (1).

## Natural Sciences

Fearn, S 2015, 'A new adult host tree record for the green and gold stag beetle *Lamprima aurata* (Scarabaeoidea: Lucanidae) in Tasmania', *The Tasmanian Naturalist* 137: 2-4.

Fearn, S 2015, 'Above ground blossom-feeding on invertebrates by the metallic skink (*Niveoscincus metallicus*) and the delicate skink (*Lampropholis delicata*) in Tasmania', *The Tasmanian Naturalist* 137: 45-47.

Fearn, S, Dowde, J, & Maynard, D 2015, 'Record sized perennial subterranean nest of the European wasp *Vespula germanica* (Hymenoptera: Vespidae: Vespinae) in northern Tasmania', *The Tasmanian Naturalist* 137: 49-56.

Fearn, S & Maynard, D 2015, 'Tasmania's favourite beetle', *Tasmania 40° South* 76: 40-44.

Lowe, J, and Fearn, S 2015, 'Superb snakes! How to rear perfect lowlands copperheads (*Austrelaps superbus*)', *Scales & Tails Australia*. 39: 22-31.



## Appendix 5

This unaudited special purpose financial report is prepared from the accounts of the City of Launceston and should be read in conjunction with the audited financial statements for the year ended 30 June 2016.

The City of Launceston annual financial statements are prepared in accordance with Australian Accounting Standards and the Local Government Act 1993. The following accounting policies used in the preparation of this special purpose financial report should be noted:

- (i) Grants and bequests are recognised as revenue in the year in which they are received, or when control over the assets comprising the contributions is obtained, but the related expenditure can occur in a later period.
- (ii) Capital grants and contributions are not included.
- (iii) The Princess Theatre and Earl Arts Centre resides within the Museum Directorate but the financial result for this facility is not included.
- (iv) Competitive Neutrality and Full Cost Attribution expenses are City of Launceston internal service charges.

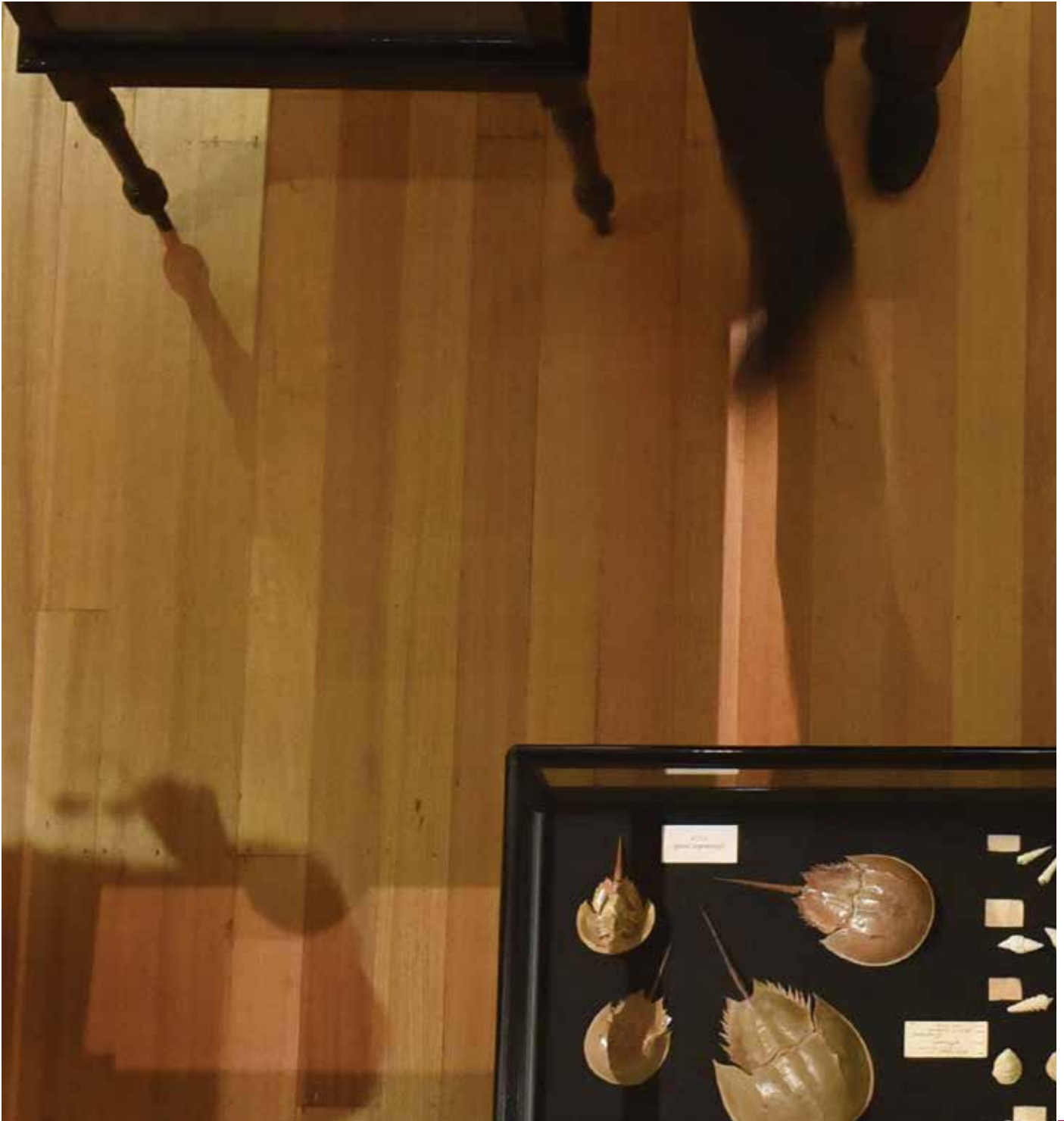
### STATEMENT OF REVENUES AND EXPENSES FOR THE YEAR ENDED 30 JUNE 2016

	2016 Actual \$	2016 Budget \$	2015 Actual \$
<b>REVENUES</b>			
Fees and Charges	364 778	361 258	395 263
<b>Grants</b>			
- State Government Operations Grant	1 366 200	1 398 843	1 358 100
- Other Operational Grants	48 209	20 000	61 727
<b>Bequests</b>			
- Bequests Received	148 701	175 000	156 483
- Interest Earned on Bequests	46 767	59 740	56 316
- Fees Received	1 296		396
<b>Donations</b>	125 387	41 818	131 905
<b>Other</b>	18 519	3 440	22 404
<b>TOTAL REVENUES</b>	<b>2 119 857</b>	<b>2 060 099</b>	<b>2 182 594</b>
<b>EXPENSES</b>			
Facilities Maintenance and Provision of Services	5 250 702	5 121 564	4 986 093
Bequests	56 915	59 740	28 313
Depreciation and Amortisation	757 839	828 166	743 121
Competitive Neutrality	39 004	39 004	-
Full Cost Attribution	299 161	299 161	293 413
<b>TOTAL EXPENSES</b>	<b>6 403 621</b>	<b>6 347 635</b>	<b>6 050 940</b>
<b>OPERATING RESULT (Council Contribution)</b>	<b>(4 283 764)</b>	<b>(4 287 536)</b>	<b>(3 868 346)</b>

The Museum Directorate also manages a Capital Works program summarised as follows, excluding the Princess Theatre and Earl Arts Centre:

### STATEMENT OF CAPITAL EXPENDITURE FOR THE YEAR ENDED 30 JUNE 2016

	2016 Actual \$	2016 Budget \$	2015 Actual \$
Capital Expenditure (Excluding Bequests)	505 273	787 128	152 937
Capital Expenditure (Acquisitions funded from Bequests)	309 874	175 000	36 768
	<b>815 147</b>	<b>962 128</b>	<b>189 705</b>
Commitments for Capital Expenditure as at the Reporting Date, due for payment no later than 1 year	97 014		133 005
<b>TOTAL CAPITAL EXPENDITURE AND COMMITMENTS</b>	<b>912 161</b>	<b>962 128</b>	<b>322 710</b>



City of **LAUNCESTON**  
**QUEEN VICTORIA**  
**MUSEUM & ART GALLERY**



Tasmanian  
Government